

## >> Product <<



## Specification & Details

All dimensions & specs are compliant with approval sheets

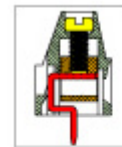
Product : [Euro Type Terminal Block >> MB Series](#)

MB 312-500M

[PDF Files](#)

- Description :
- Pitch : 5.00 mm (0.197 inch)

Pitch: 5.00mm(0.197inch)

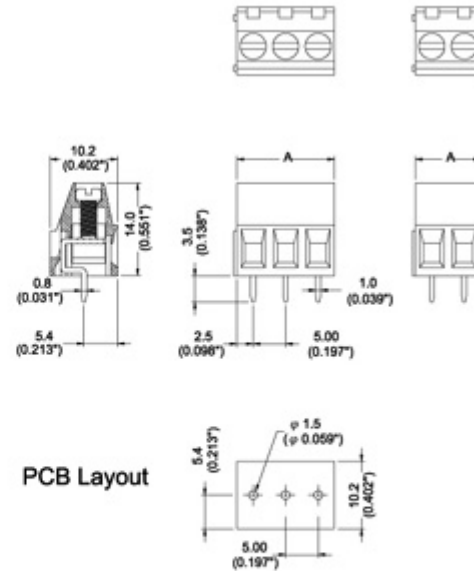


## SPECIFICATIONS

			CUL	VDE
負載電壓	Rated Voltage	Bemessungsspannung	AC 300V	AC 450V
負載電流	Rated Current	Bemessungsstrom	16A	16A
電線線徑	Wire Size	Leitergrößen	26~12AWG	0.2~2.5mm <sup>2</sup>
塑膠本體	Housing Material	Isolierstofftyp	Polyamide66(UL94V-0)	
押線圈	Cage Clamp	Klemmkörper	Brass, Ni plated	
端子	Terminal	Stiftmaterial	Brass, Tin plated	
螺絲	Screw Size	Schraubengewinde	M2.6, steel, Ni plated	
操作溫度	Operating Temperature	Umgebungstemperatur	-40°C to + 105°C	
扭力	Torque	Anzugsmoment	5.0 lb-inch	
PC板孔徑	PCB Hole Diameter	Lochdurchmesser	φ 1.5mm	
UL File No.	E167040			

TABLE

Item No.	A(mm)	A(inch)
MB312-500M02	10.2	0.400
MB312-500M03	15.2	0.600



**Note:**

Screw Plating: Changes are available upon request

Cage Clamp: MB 310: Steel

MB 311: Zinc