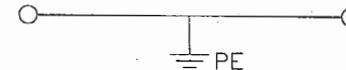
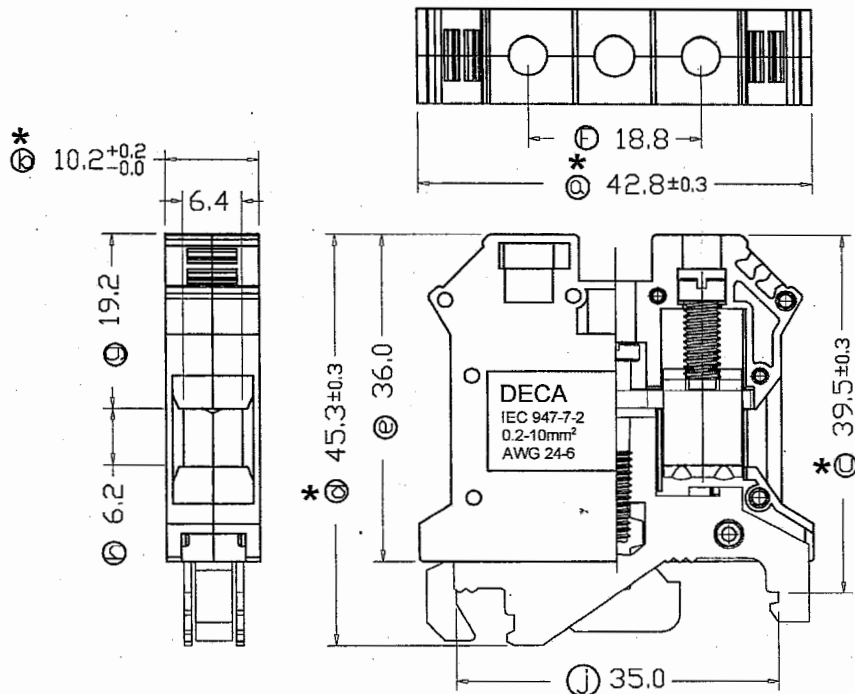


# CPE10N

CE RoHS Compliant



CUL IEC

Solid wire	24~6 AWG	0.2~10mm <sup>2</sup>
Stranded wire	24~6 AWG	0.2~10mm <sup>2</sup>
Torque	1.5~1.8Nm	13~16lb-in
Insulating withstand voltage	2500V AC, 1minute	
Screw	M4	
Wire strip length	10~12mm	
Mounting Rail	TS35x7.5/TS35x15/TS32	

CONFIRMED & ACCEPTED BY

	Material	Plating/Finish	Remark
1	Insulating body PA66 (UL94 V-0)		Green-Yellow
2	Terminal Copper	Tin plated	
3	Cage clamp Steel	Zinc	
4	Screw 1 Steel M4	Zinc	
5	Screw 2 Steel M4	Zinc	
6	Contact piece of 1 Brass	Tin plated	
7	Contact piece of 2 Steel	Zinc	
8	Nut Steel	Zinc	

定案

A

REV.

文件管制  
NOV 25, 2014  
文管中心

DECA® SwitchLab Inc.

DESIGN	CHECK	APPROVE
DATE	DATE	DATE
2014/11/25	2014/11/25	2014/11/25

PART NAME	UNIT	SCALE
Terminal Block	MM	1:1
DRAWING NO.		SHEET
CPE10N		1/1