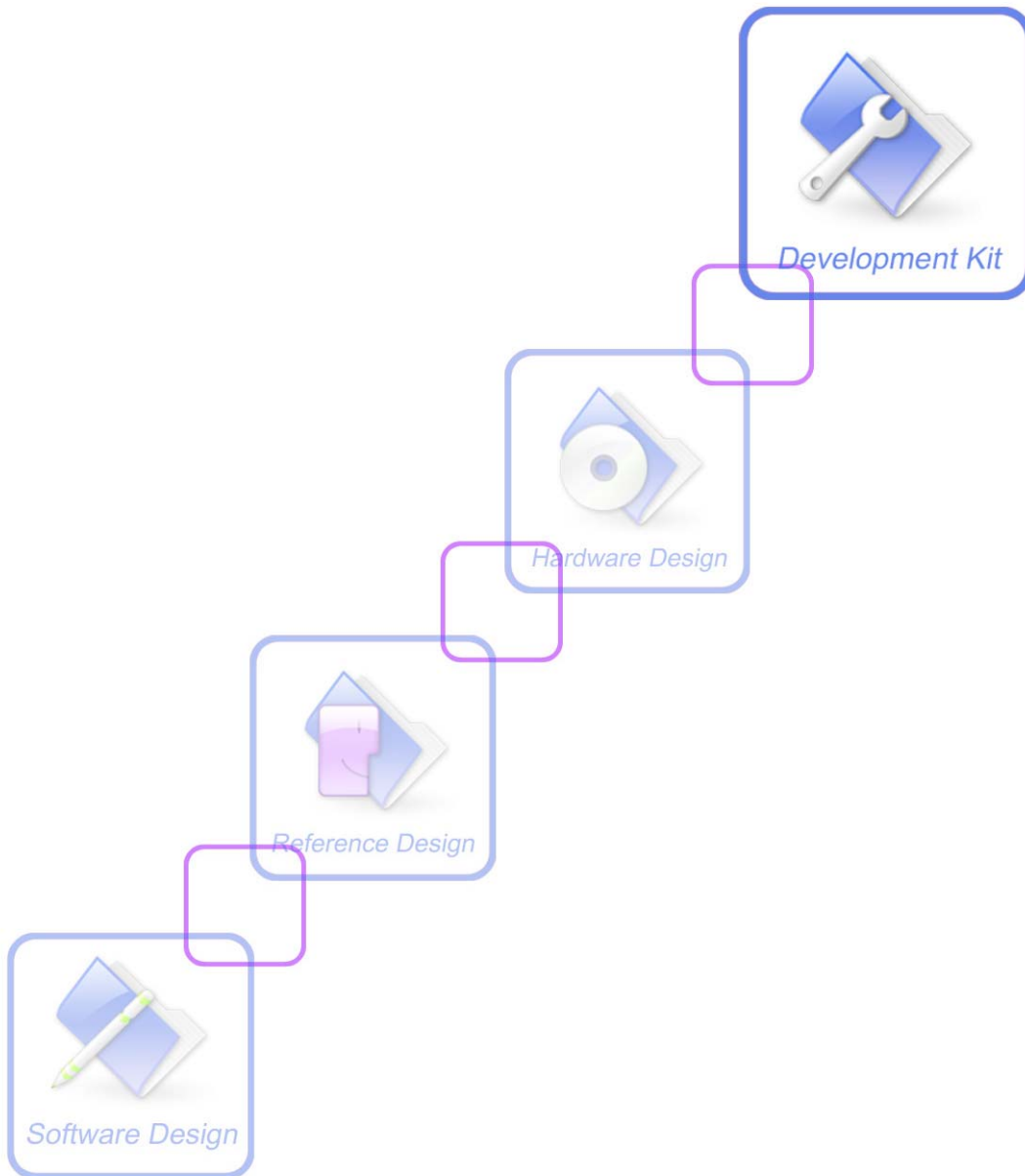




Mini PCIe_EVB kit_ User Guide_V1.00



Document Title:	Mini PCIe EVB kit User Guide
Version:	1.00
Date:	2014-05-05
Status:	Release
Document Control ID:	Mini PCIe _EVB kit_User Guide_V1.00

General Notes

SIMCom offers this information as a service to its customers, to support application and engineering efforts that use the products designed by SIMCom. The information provided is based upon requirements specifically provided to SIMCom by the customers. SIMCom has not undertaken any independent search for additional relevant information, including any information that may be in the customer's possession. Furthermore, system validation of this product designed by SIMCom within a larger electronic system remains the responsibility of the customer or the customer's system integrator. All specifications supplied herein are subject to change.

Copyright

This document contains proprietary technical information which is the property of SIMCom Limited., copying of this document and giving it to others and the using or communication of the contents thereof, are forbidden without express authority. Offenders are liable to the payment of damages. All rights reserved in the event of grant of a patent or the registration of a utility model or design. All specification supplied herein are subject to change without notice at any time.

Copyright © Shanghai SIMCom Wireless Solutions Ltd. 2014

Contents

Contents.....	3
Version History	6
1. Mini PCIe EVB	7
2. EVB Accessory.....	9
3. Accessory Interface.....	10
3.1 Adapter Interface	10
3.2 Audio Interface	11
3.3 SIM card interface	12
3.4 Antenna Interface.....	13
3.5 UART port interface	14
3.6 LED Indicator and Switch	15
4. Test Interface	17
4.1 J2001.....	17
4.2 J2002.....	18
4.3 J2003.....	19
5. EVB and Accessory.....	20
6. Illustration:	21
6.1 Power on module	21
6.2 Registering Network and making a call.....	21
6.3 Downloading	26
6.3.1 USB Port Specification.....	26
6.3.2 Firmware Update	27
7. Appendix.....	35
I. Related Documents.....	35
II. Safety Caution	35

Table Index

TABLE 1: 5V ADAPTER INTERFACE	10
TABLE 2: HEADSET INTERFACE	11
TABLE 3: EARPHONE INTERFACE:.....	11
TABLE 4: UIM CARD SOCKET	12
TABLE 5: MAIN UART PORT.....	14
TABLE 6: DEBUG UART PORT:.....	15
TABLE 7: WORKING STATE OF LED AS LIST:.....	15
TABLE 8: FUNCTION OF SWITCH	16
TABLE 9: J103 INTERFACE PIN LIST.....	17
TABLE 10: J2002 INTERFACE PIN LIST.....	18
TABLE 11: J2003 INTERFACE PIN LIST	19
TABLE 12: RELATED DOCUMENTS	35
TABLE 13: SAFETY CAUTION.....	35

Figure Index

FIGURE 1: EVB TOP VIEW	7
FIGURE 2: EVB BOTTOM VIEW	8
FIGURE 3: EVB ACCESSORY	9
FIGURE 4: ADAPTER INTERFACE	10
FIGURE 5: AUDIO INTERFACE.....	11
FIGURE 6: SIM CARD INTERFACE	12
FIGURE 7: ANTENNA INTERFACE	13
FIGURE 8: UART PORTS	14
FIGURE 9: LED INDICATOR AND SWITCH	15
FIGURE 10: TEST INTERFACE OVERVIEW	17
FIGURE 11: J2001 INTERFACE.....	17
FIGURE 12: J2002 INTERFACE.....	18
FIGURE 13: J2003 INTERFACE.....	19
FIGURE 14: EVB AND ACCESSORY	20
FIGURE 15: COM PORTS AND MODEM	21
FIGURE 16: RUN THE HYPER TERMINAL	22
FIGURE 17: NAME THE HYPER TERMINAL	22
FIGURE 18: CHOOSE THE RIGHT COM PORT	23
FIGURE 19: SET UP THE COM PROPERTY	24
FIGURE 20: CONNECT THE MODULE	24
FIGURE 21: MAKE A CALL	25
FIGURE 22: OPEN GNSS	25
FIGURE 23: RUN THE DOWNLOAD TOOL.....	26
FIGURE 24: BROWSE THE SOFTWARE PACKAGE	27
FIGURE 25: START DOWNLOAD	28
FIGURE 26: BACKUP QCN	29
FIGURE 27: BACKUP FINISHED.....	29
FIGURE 28: DOWN FW	30
FIGURE 29: DOWNLOADING IN PROCESS.....	30
FIGURE 30: DOWNLOADING IN PROCESS.....	31
FIGURE 31: RE ENUMERATION AND CONNECTION DEVICE	31
FIGURE 32: RECOVER QCN.....	32
FIGURE 33: RECOVER QCN FINISHED.....	32
FIGURE 34: DOWN AP	33
FIGURE 35: DOWN AP FINISHED.....	33
FIGURE 36: ISO UPGRADE	34
FIGURE 37: PUSH FINISHED	34

Version History

Data	Version	Description of change	Author
2014-05-05	1.00	Origin	Honggang Ma

SCOPE

This document describes how to use Mini PCIe EVB to do test; user can get useful information about the Mini PCIe EVB quickly through this document. This document applies to Mini PCIe products from SIMCom Company.

This document is subject to change without notice at any time.

1. Mini PCIe EVB

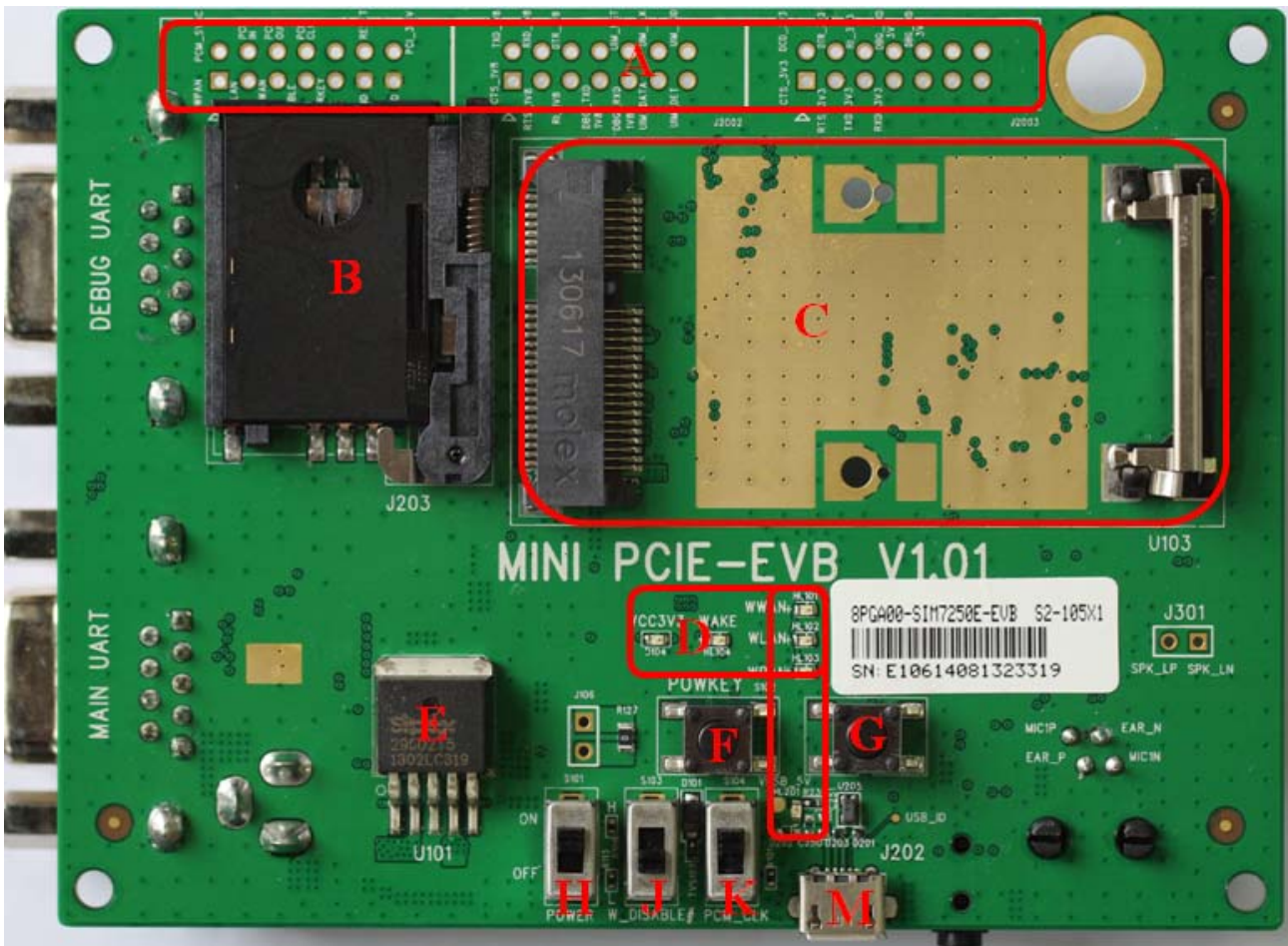


Figure 1: EVB top view

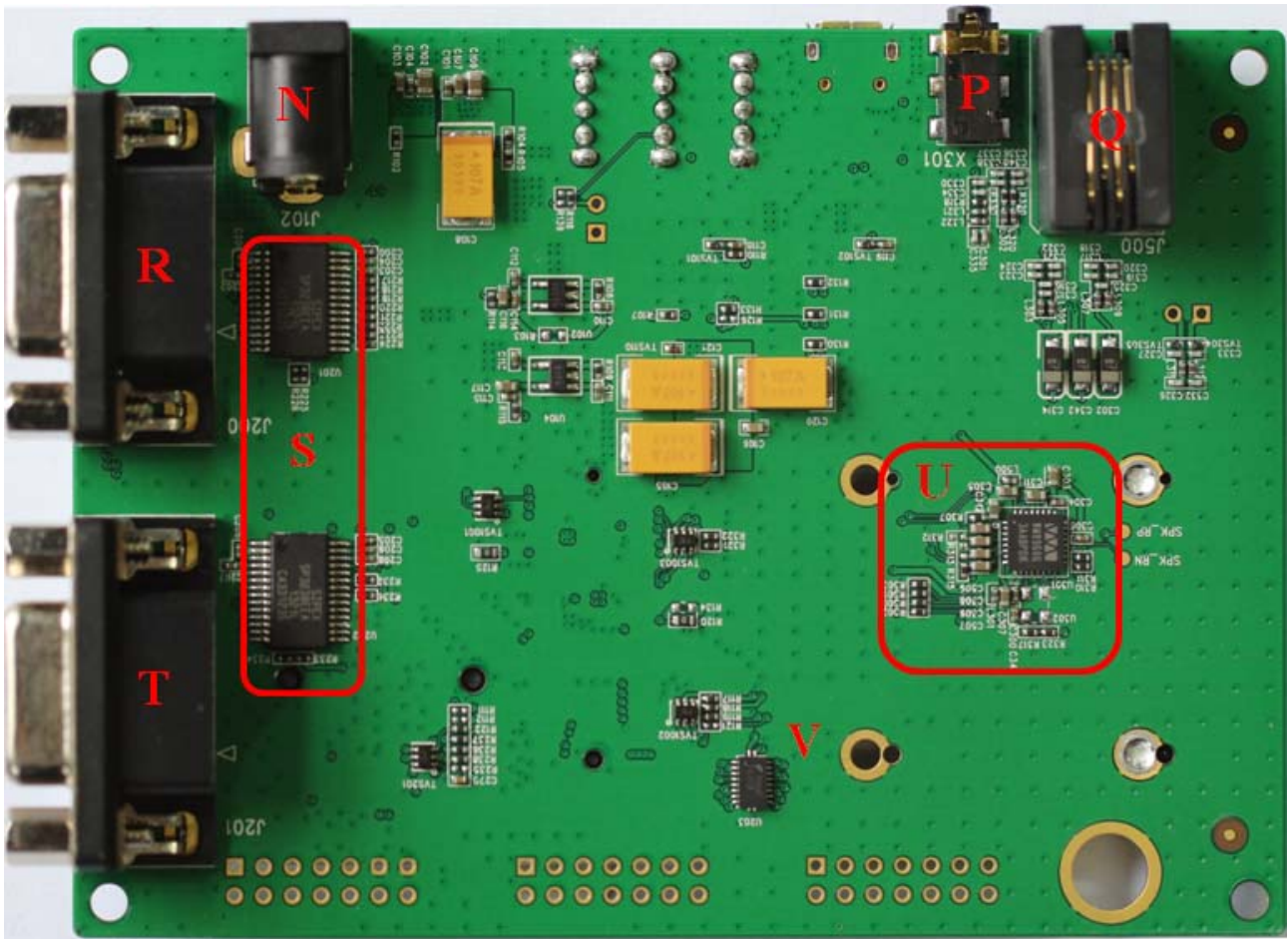


Figure 2: EVB bottom view

- A: Test point
- B: SIM card socket with SIM_DET function
- C: Mini PCIe card holder
- D: Indicator LED
- E: System power (3.3V)
- F: Power on key (reserved)
- G: System reset key
- H: Power switch
- J: RF control switch
- K: WM9660 clock enable signal (reserved)
- M: Micro USB connector
- N: 5V DC jack
- P: Audio jack (reserved)
- Q: Handset jack
- R: Main UART (reserved)
- S: UART to RS232 IC
- T: DBG UART (reserved)
- U: WM9660 codec
- V: Level shifter

2. EVB Accessory



Figure 3: EVB accessory

- A: GSM/WCDMA/LTE Antenna
- B: 5V DC adapter
- C: Antenna cable
- D: Mini PCIe EVB
- E: Micro USB cable
- F: GPS/GLONASS Antenna

3. Accessory Interface

3.1 Adapter Interface

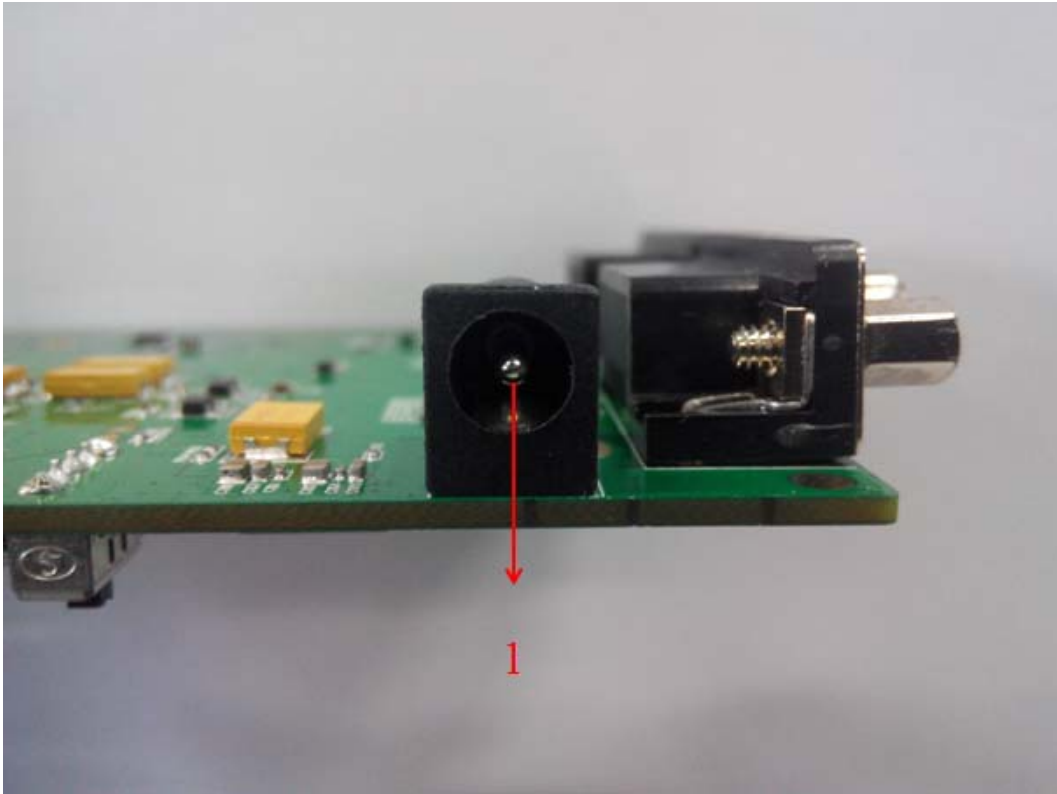


Figure 4: Adapter interface

Table 1: 5V adapter interface

Pin	Signal	I/O	Description
1	Adapter input	I	5V/2.0A DC source input

3.2 Audio Interface

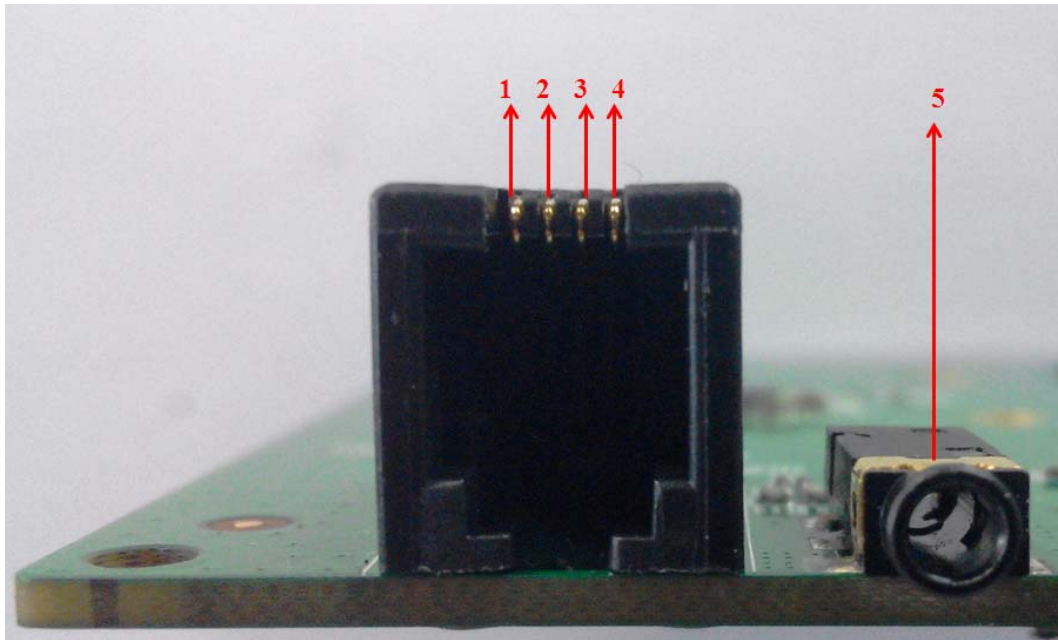


Figure 5: Audio interface

Table 2: Headset interface

Pin	Signal	I/O	Description
1	MIC1N	I	Negative microphone input
2	EAR1N	O	Negative receiver output
3	EAR1P	O	Positive microphone input
4	MIC1P	I	Positive receiver output

Table 3: Earphone interface:

Pin	Signal	I/O	Description
5	MIC2& Headphone	I/O	Auxiliary audio input/output

Note: The default audio channel is headset interface (MIC1 and EAR1), customer should connect the headset to the headset interface, and the sequence of the signal should match with table 2.

3.3 SIM card interface

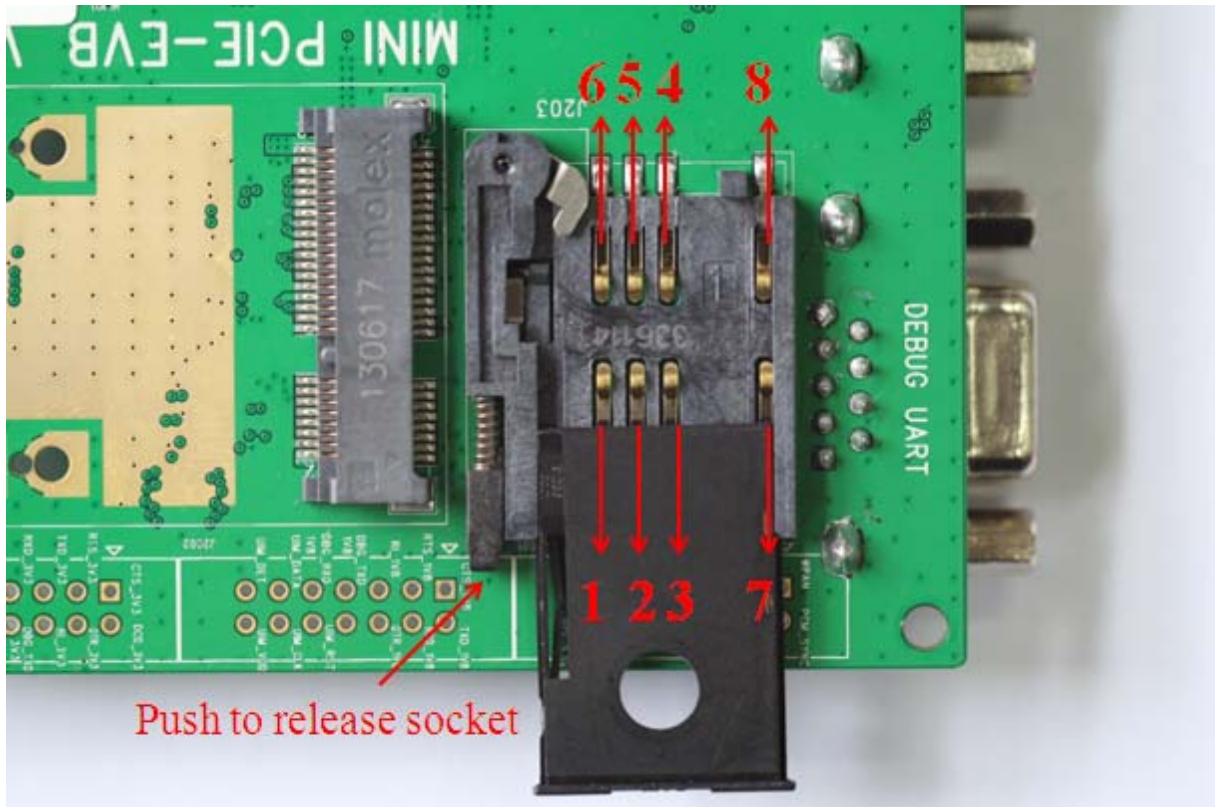


Figure 6: SIM card interface

Table 4: UIM card socket

Pin	Signal	I/O	Description
1	GND	-	Ground
2	UIM_VPP	-	NC
3	UIM_DATA	I/O	External UIM card data signal
4	UIM_CLK	O	External UIM card clock signal
5	UIM_RST	O	External UIM card reset signal
6	UIM_VDD	O	Power source for the external UIM card
7	GND	-	Ground
8	UIM_DET	I	External UIM card presence detect signal, hot swap

3.4 Antenna Interface



Figure 7: Antenna interface

Note: This chapter takes SIM7250E as an example, the sequence of antennas maybe different, customer should refer to the relevant Hardware Design document.

3.5 UART port interface

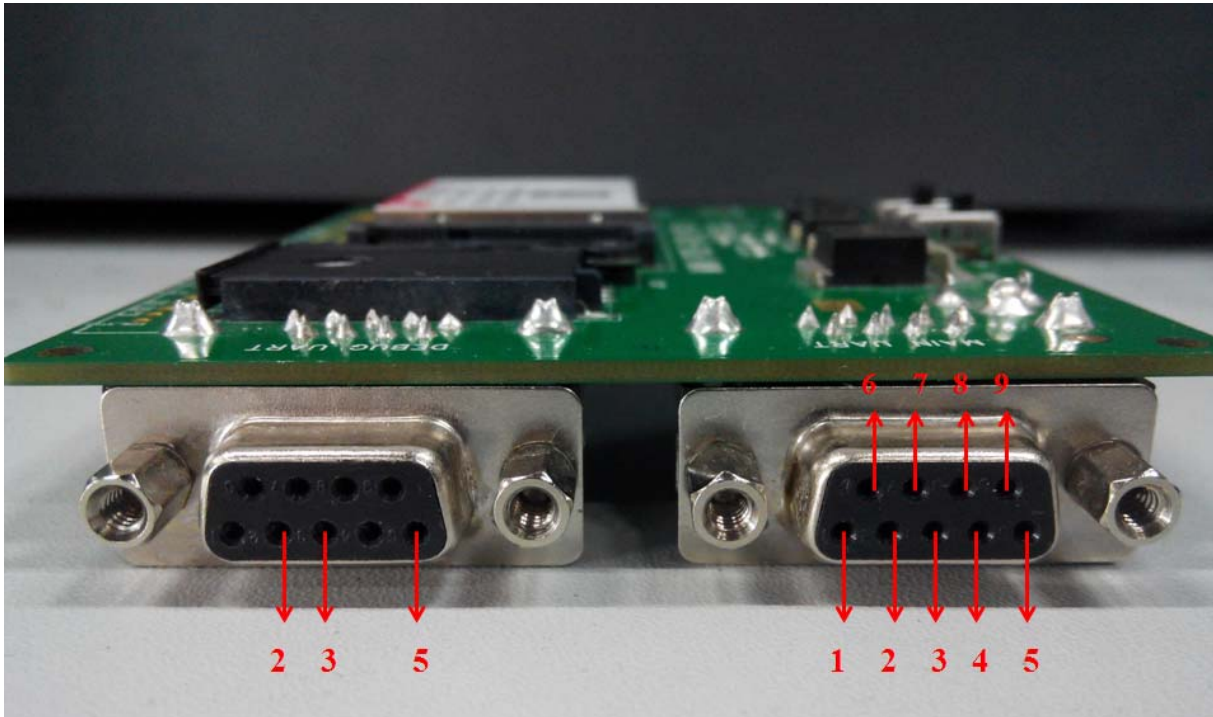


Figure 8: UART ports

Main UART (Reserved)

AUX UART (Reserved)

Table 5: Main UART port

Pin	Signal	I/O	Description
1	DCD	O	Data carrier detection
2	TXD	O	Transmit data
3	RXD	I	Receive data
4	DTR	I	Data Terminal Ready
5	GND		GND
6	-	-	-
7	CTS	I	Clear to Send
8	RTS	O	Request to Send
9	RI	O	Ring Indicator

Table 6: Debug UART Port:

Pin	Signal	I/O	Description
2	DEBUG_TX	O	Transmit data
3	DEBUG_RX	I	Receive data
5	GND		GND

3.6 LED Indicator and Switch

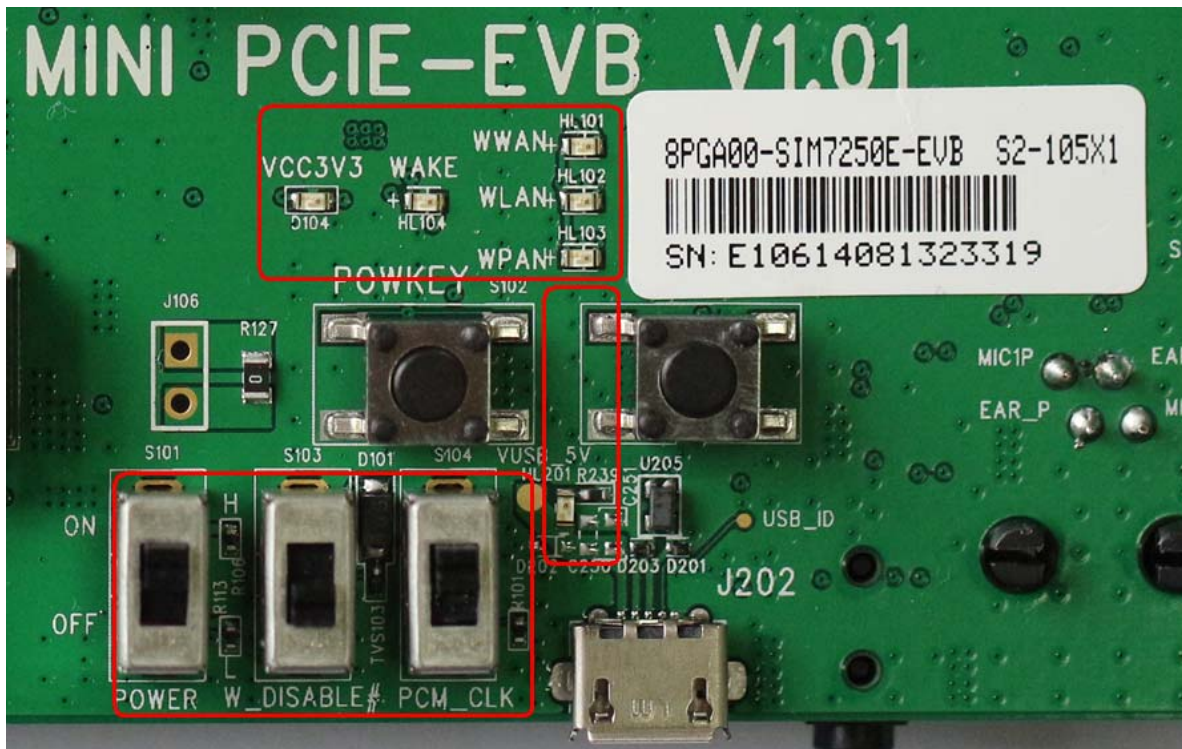


Figure 9: LED indicator and Switch

Figure 9 shows the indicator LED and function switch, the detail function please refer to table 7 and table 8.

Table 7: Working state of LED as list:

Ref No.	Name	Function description
D104	VCC3V3 indicator	Bright: system has the 3.3V power Extinct: system does not have the 3.3V power
HL104	WAKE indicator	Blinking one time when module wake up host
HL101	WWAN indicator	Refer to the HD document for details;

HL102	WLAN indicator	Reserved for WLAN function
HL103	WPAN indicator	Reserved for WPAN function
HL201	USB indicator	Bright: USB cable inserted Extinct: USB cable does not insert

Table 8: Function of switch

Ref No.	Name	Function description
S101	VCC3V3 indicator	Bright: system has the 3.3V power Extinct: system does not have the 3.3V power
S103	RF Control switch	Switch down: module goes into airplane mode Switch up: module controlled by software
S104	PCM Clock enable switch	Reserved, switch at middle state

4. Test Interface

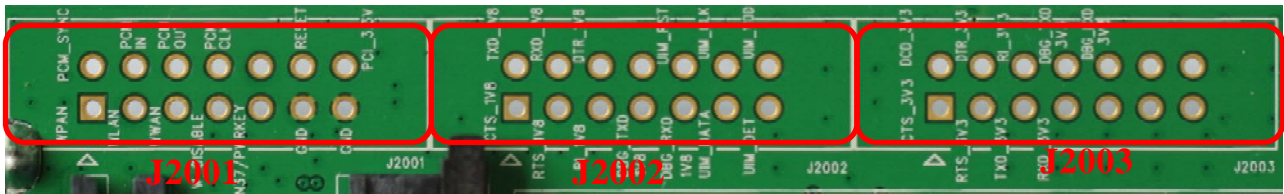


Figure 10: Test interface overview

4.1 J2001

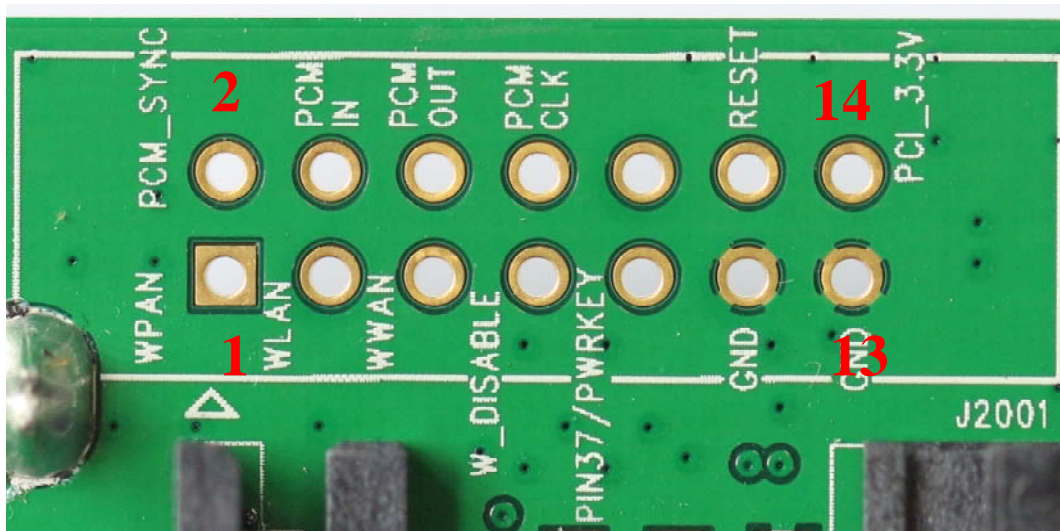


Figure 11: J2001 interface

Table 9: J103 Interface Pin List

Pin	Signal	I/O	Description
1	WPAN	I	Reserved for WPAN
2	PCM_SYNC	O	PCM frame synchronization
3	WLAN	I	Reserved for WLAN
4	PCM_IN	I	PCM data input
5	WWAN	I	Network status indicator
6	PCM_OUT	O	PCM data output
7	W_DISABLE	I	Active low signal for wireless disabling (Airplane mode)
8	PCM_CLK	O	PCM clock
9	PIN37/PWRKEY	-	Reserved
10	NC	-	-

11	GND	-	Ground
12	RESET	I	Active low functional reset to the card
13	GND	-	Ground
14	PCI_3.3V	I	3.3V supply

4.2 J2002

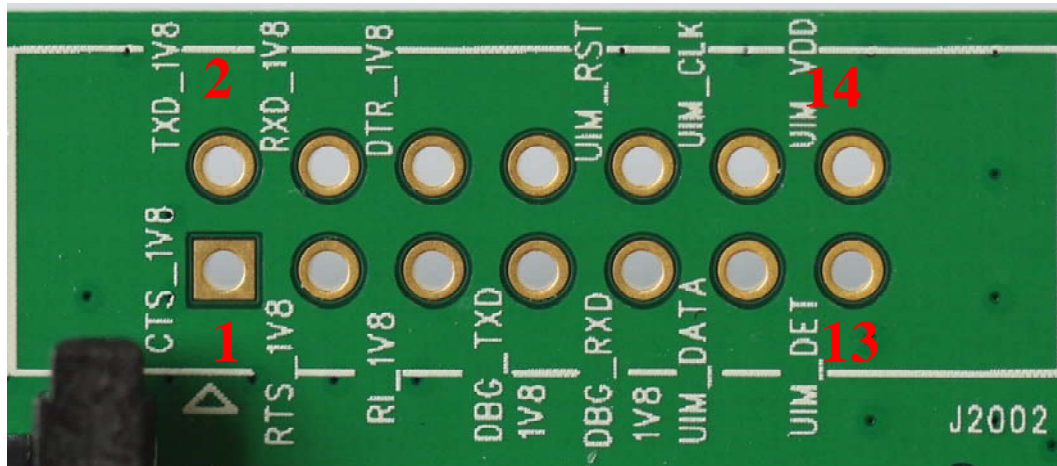


Figure 12: J2002 interface

Table 10: J2002 Interface Pin List

Pin	Signal	I/O	Description
1	CTS_1V8	I	Reserved for future use. (1.8V voltage domain)
2	TXD_1V8	O	
3	RTS_1V8	O	
4	RXD_1V8	I	
5	RI_1V8	O	
6	DTR_1V8	I	
7	DBG_TXD_1V8	O	Reserved for DEBUG (1.8V voltage domain)
8	DBG_RXD_1V8	I	
10	UIM_RST	O	UIM card reset signal
11	UIM_DATA	I/O	UIM card data signal
12	UIM_CLK	O	UIM card clock signal
13	UIM_DET	I	External UIM card presence detect signal, hot swap
14	UIM_VDD	O	Power source for the external UIM card

4.3 J2003

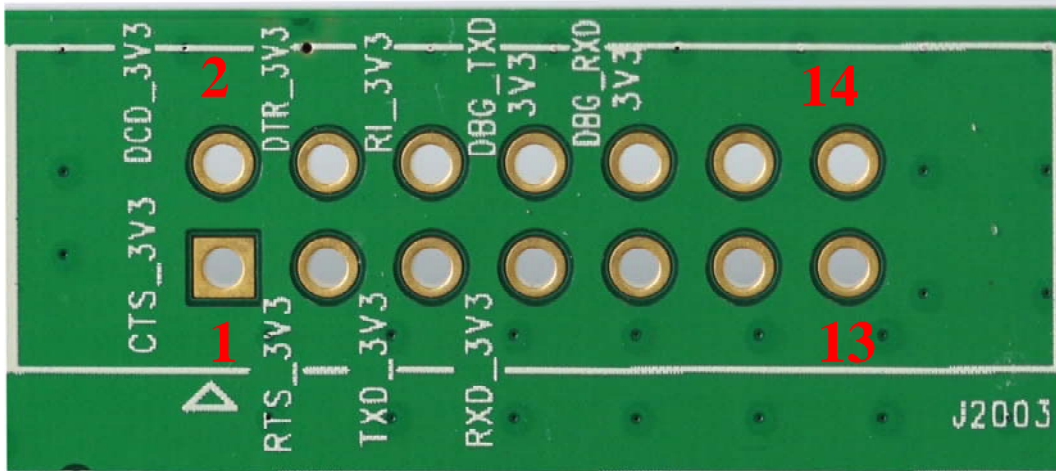


Figure 13: J2003 interface

Table 11: J2003 Interface Pin List

Pin	Signal	I/O	Description
1	CTS_3V3	O	The UART port is a full function serial port, reserved for debug and future use. (3.3V voltage domain)
2	DCD_3V3	I	
3	RTS_3V3	I	
4	DTR_3V3	O	
5	TXD_3V3	I	
6	RI_3V3	I	
7	RXD_3V3	O	
8	DBG_TXD_3V3	I	
9	-	-	
10	DBG_RXD_3V3	O	
11	NC		The DBG port is a 3-wire serial port, reserved for debug and future use. (3.3V voltage domain)
12	NC		
13	NC		
14	NC		

5. EVB and Accessory

The EVB and its accessory are equipped as the Figure 14



Figure 14: EVB and accessory

Note: the headset is not included in the EVB Kit. S101 and S103 switch up and set the S104 at the middle position.

6. Illustration:

6.1 Power on module

The Mini PCIe module is designed with auto power on with power appears.

The procedure of power on the module described as the following steps:

1. Insert the module to the Mini PCIe EVB;
2. Equip the accessory as figure 14 shows; make sure the SIM card has equipped;
2. Plug in 5V DC adapter, and switch S101 to “ON” state, then D104 will lighten;

The module would power on, HL101 would flash at a certain frequency, and user can judge registering status of the module by the HL101. For detailed description, please refer to *document [1]*.

6.2 Registering Network and making a call

User should setup the driver on the PC for the proper operation, The procedure of making a call described as the following steps:

- 1) User should power on the module as chapter 6.1 described.
- 2) Connect the micro USB cable to the USB connector;
- 3) Open the Hyper Terminal (AT command windows) on your computer.
- 4) Check the serial port number: My computer (right click) → Manage → Device Manager → Ports (COM&LPT)

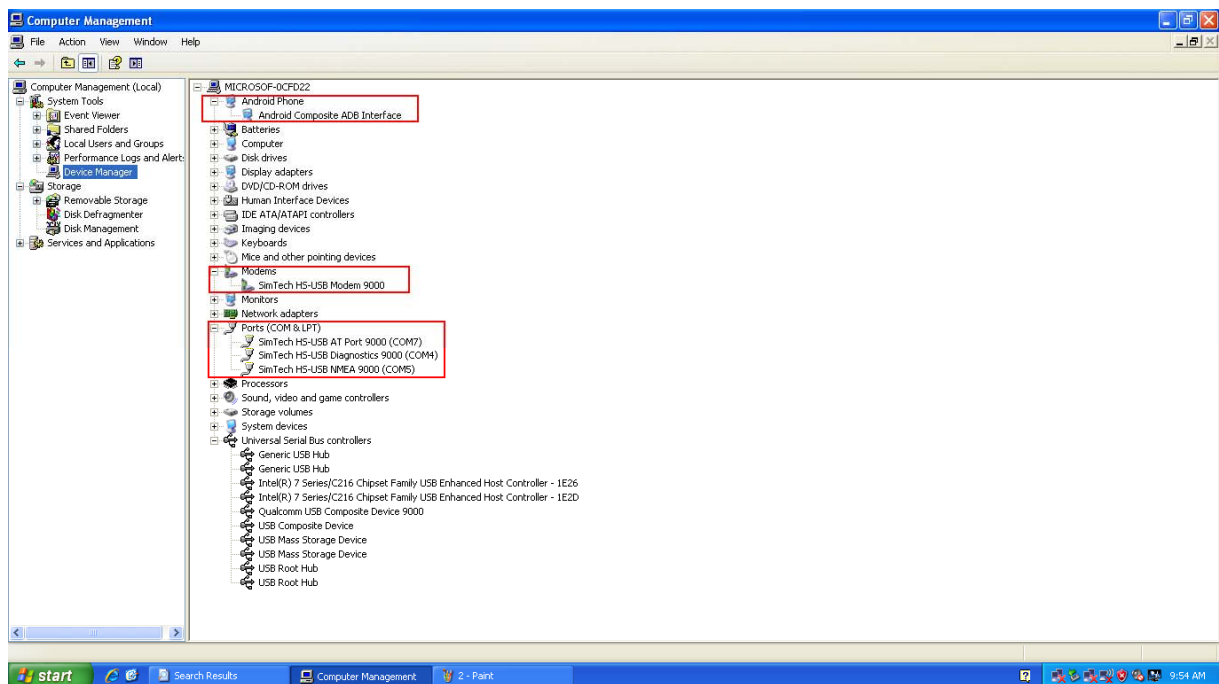


Figure 15: COM ports and modem

5) Use the Hyper Terminal to call the module as following steps:

- Open the HyperTerminal: START → All Programs → Accessory → Communication → HyperTerminal.

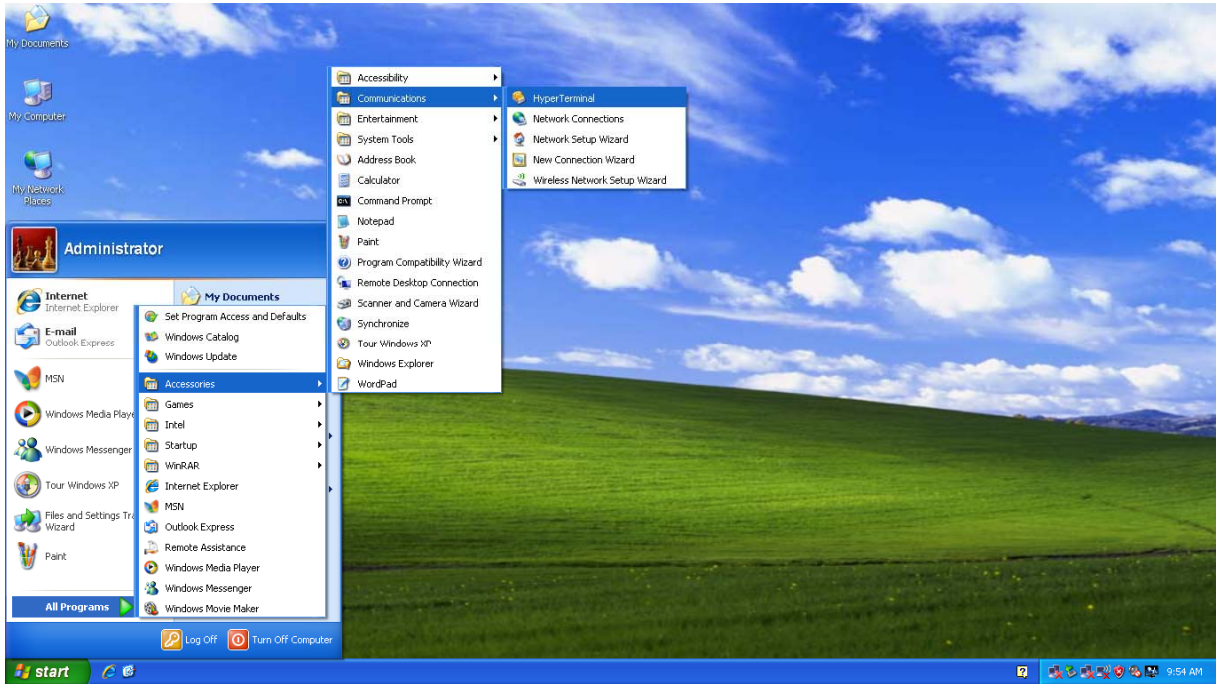


Figure 16: Run the hyper terminal

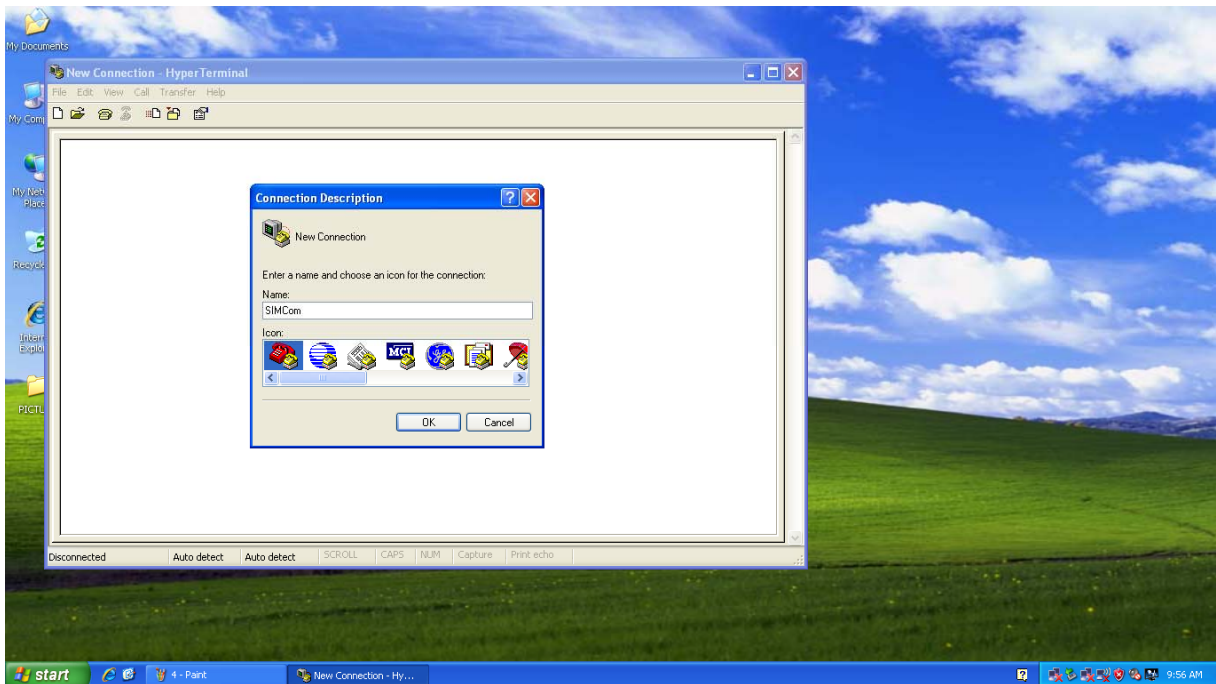


Figure 17: Name the hyper terminal

- Configure the serial port number

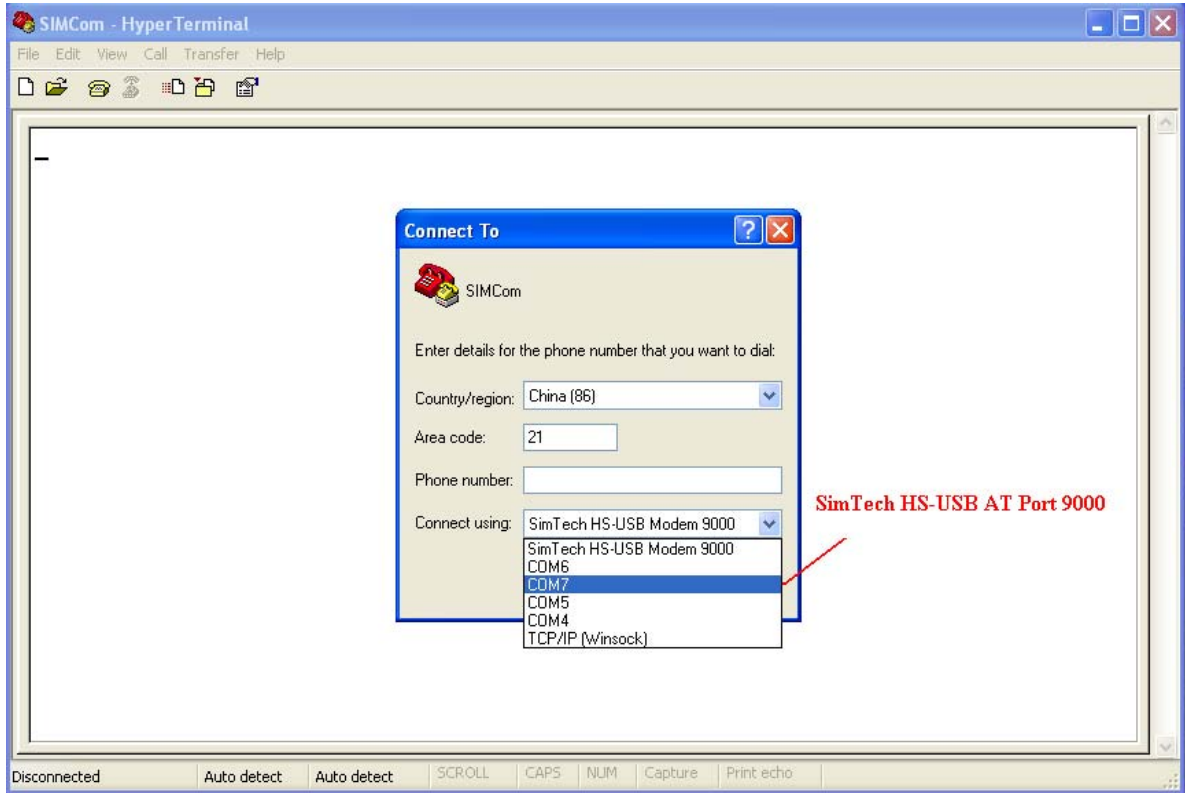


Figure 18: Choose the right COM port

- Set the baud rate and flow control, User can set the baud rate from 1200bps to 115200bps, and the flow control set to “None”

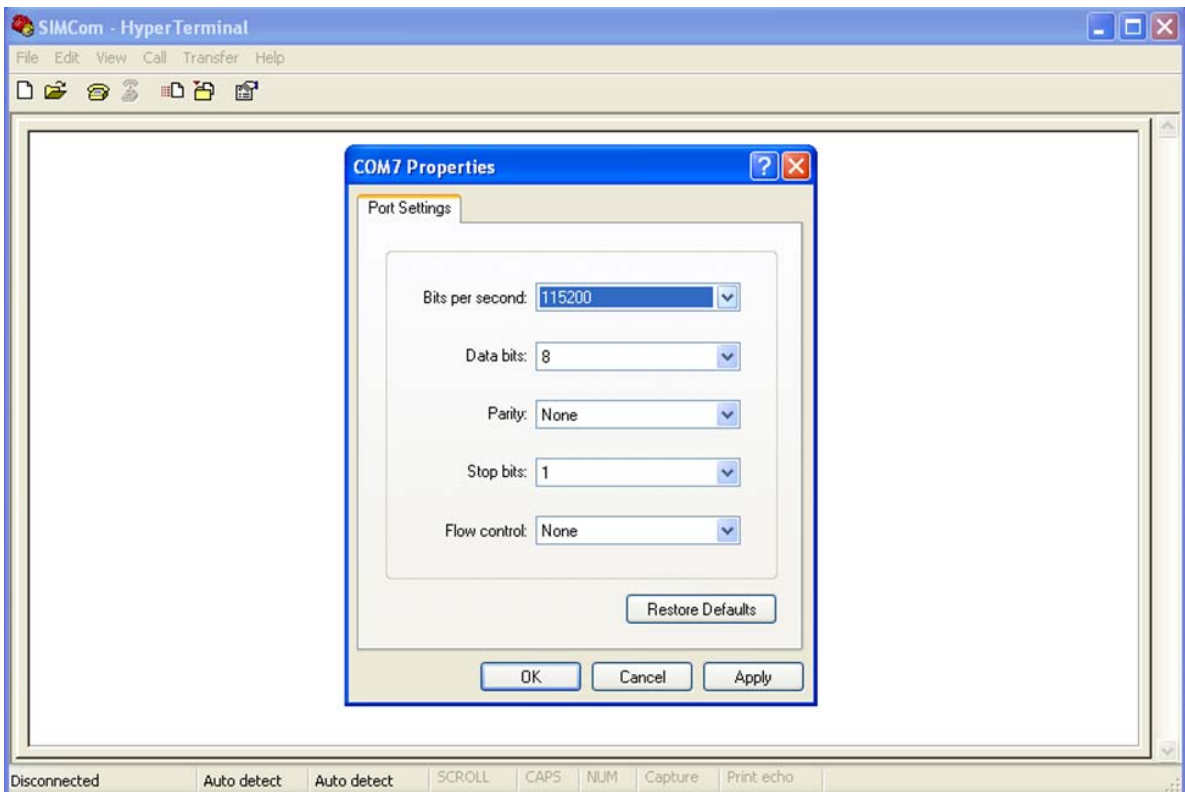


Figure 19: Set up the COM property

- Connect the module

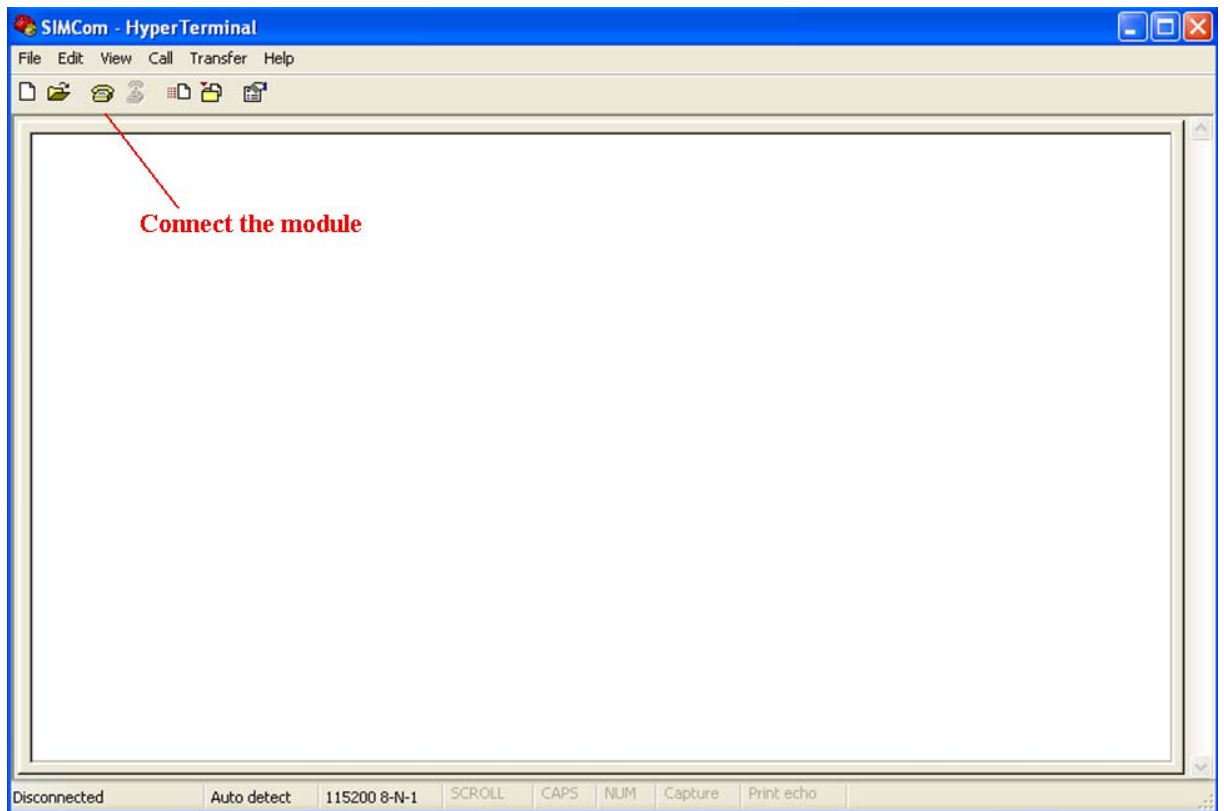


Figure 20: Connect the module

- 6) Click the “call” icon.
 - Typing the AT command. When module is powered on, user must firstly send “AT” to synchronize the baud rate. The default setting of the module is autobauding.
 - Use AT command ATD to make a call.

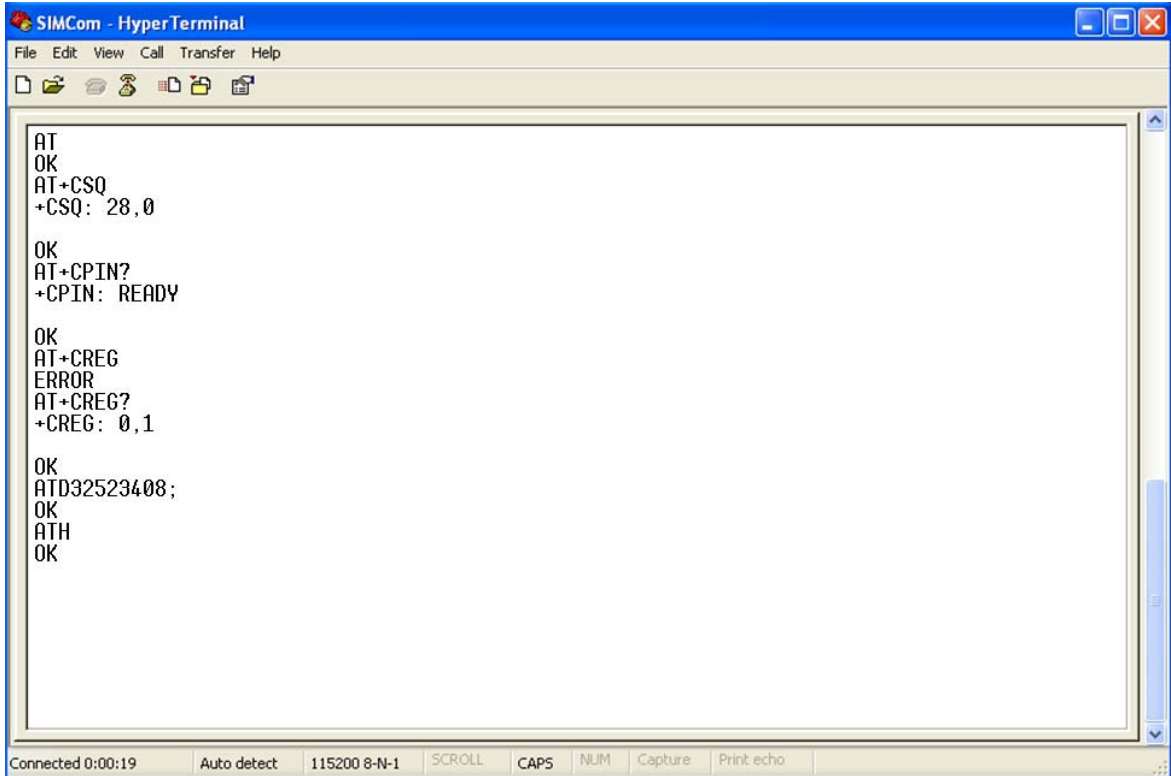


Figure 21: Make a call

- 7) User can also operate the GPS with the AT+CGPS command, then user can see the NMEA information from the SimTech HS-USB NMEA Port. Refer to the AT Command document to get more operation guide.

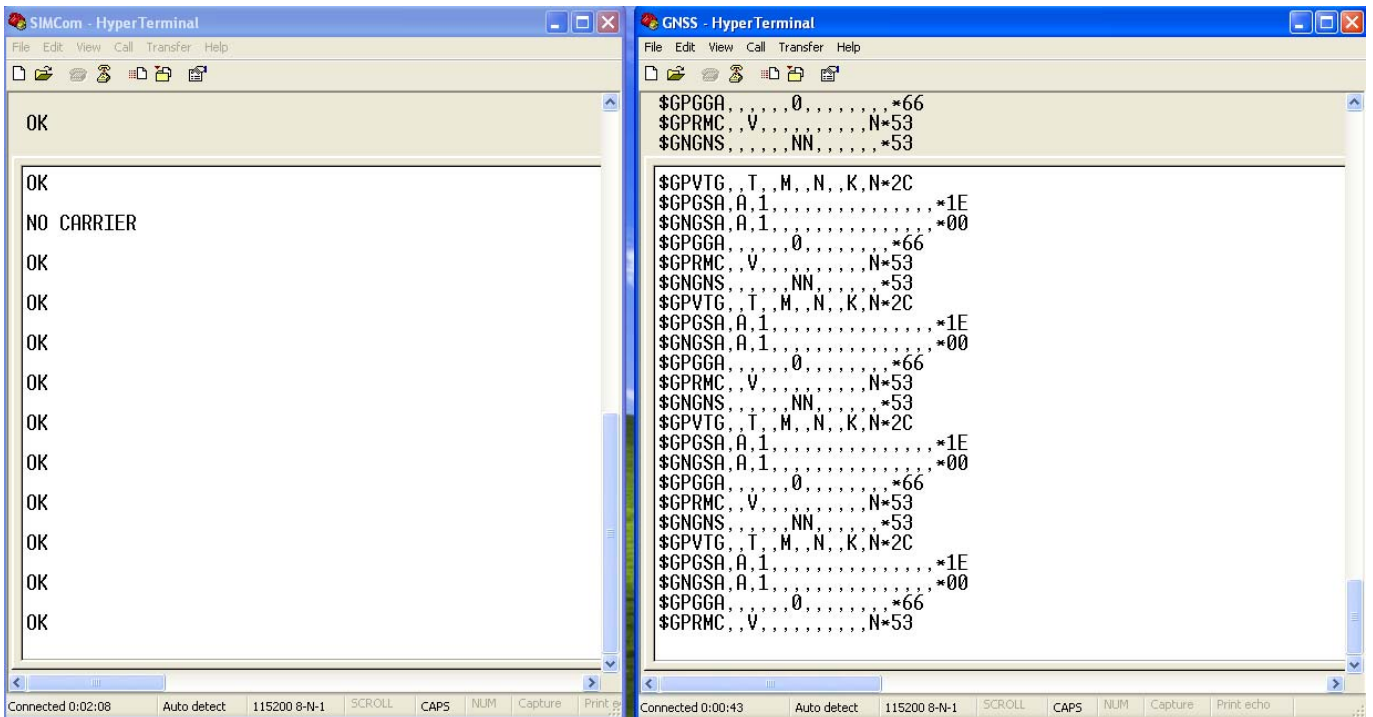


Figure 22: Open GNSS

6.3 Downloading

This chapter introduces software upgrade process of SIM72X0 series modules. The update tool is “SIM72X0_UpdateTool_V1.0.exe”. The following pictures show the upgrade process and other functional processes.

6.3.1 USB Port Specification

First user should connect the micro USB cable to module, and power on the module.

Then user could run the tool, after the tool is opened, it will scan the device, if the module is ready, the tool will display like the following picture.

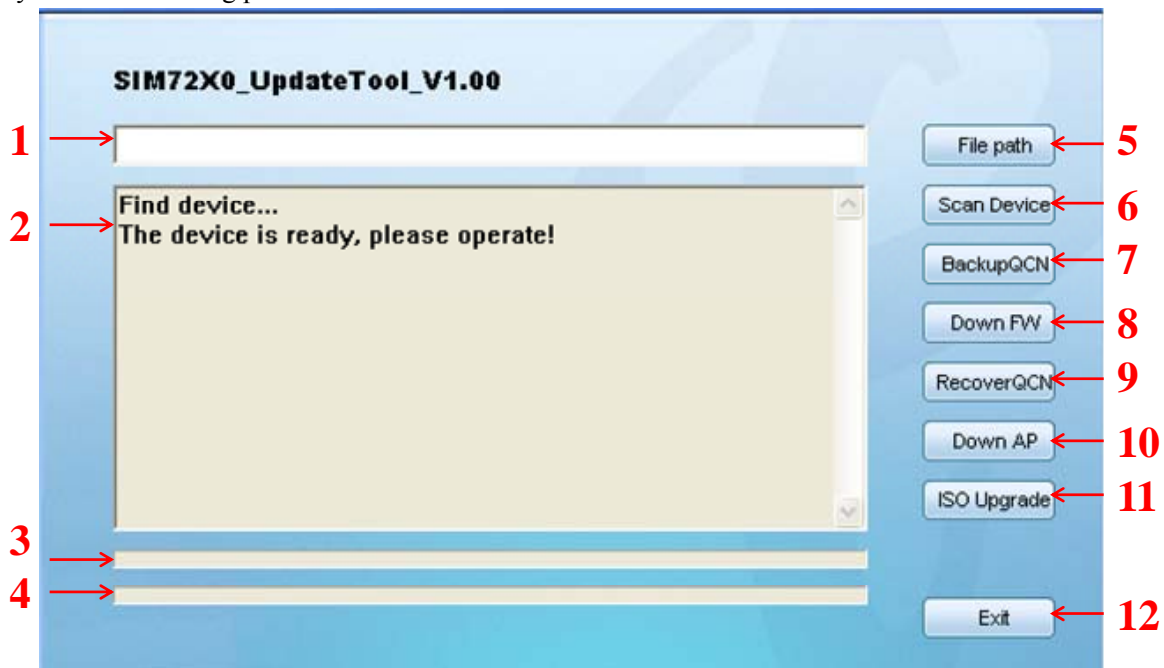


Figure 23: Run the download tool

- 1: The upgrade files display area.
- 2: The upgrade process display area.
- 3: The progress bar shows the step function.
- 4: The progress bar shows the total function.
- 5: File selection button.
- 6: Device scan button.
- 7: QCN file backup button.
- 8: Firmware download button.
- 9: QCN file recover button.
- 10: Image files download button.
- 11: ISO file upgrade button.
- 12: Exit the program.

6.3.2 Firmware Update

First user should connect the micro USB cable to module, and power on the module. Then user could run the tool, Tool will scan the device automatically, if the module is ready, the tool will prompts the user to upgrade.

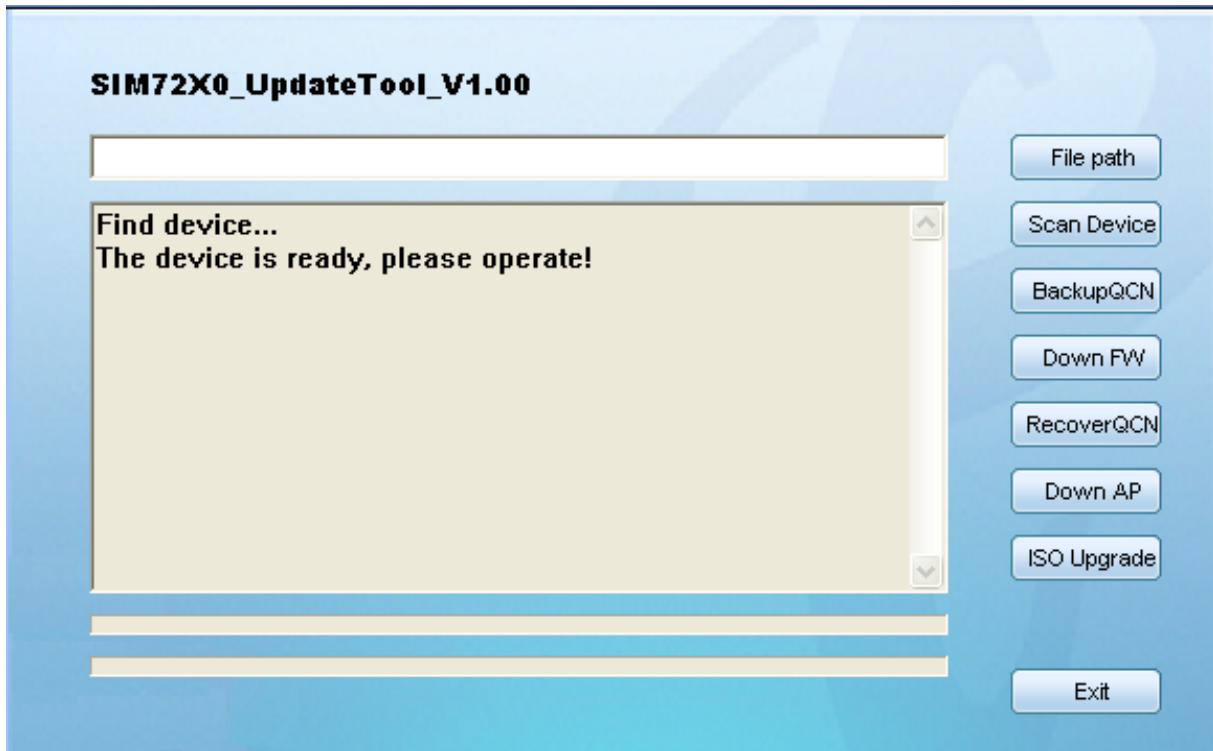


Figure 24: Browse the software package

[File path]

Upgrade FW or upgrade the AP file, user need to select the upgrade file path firstly.

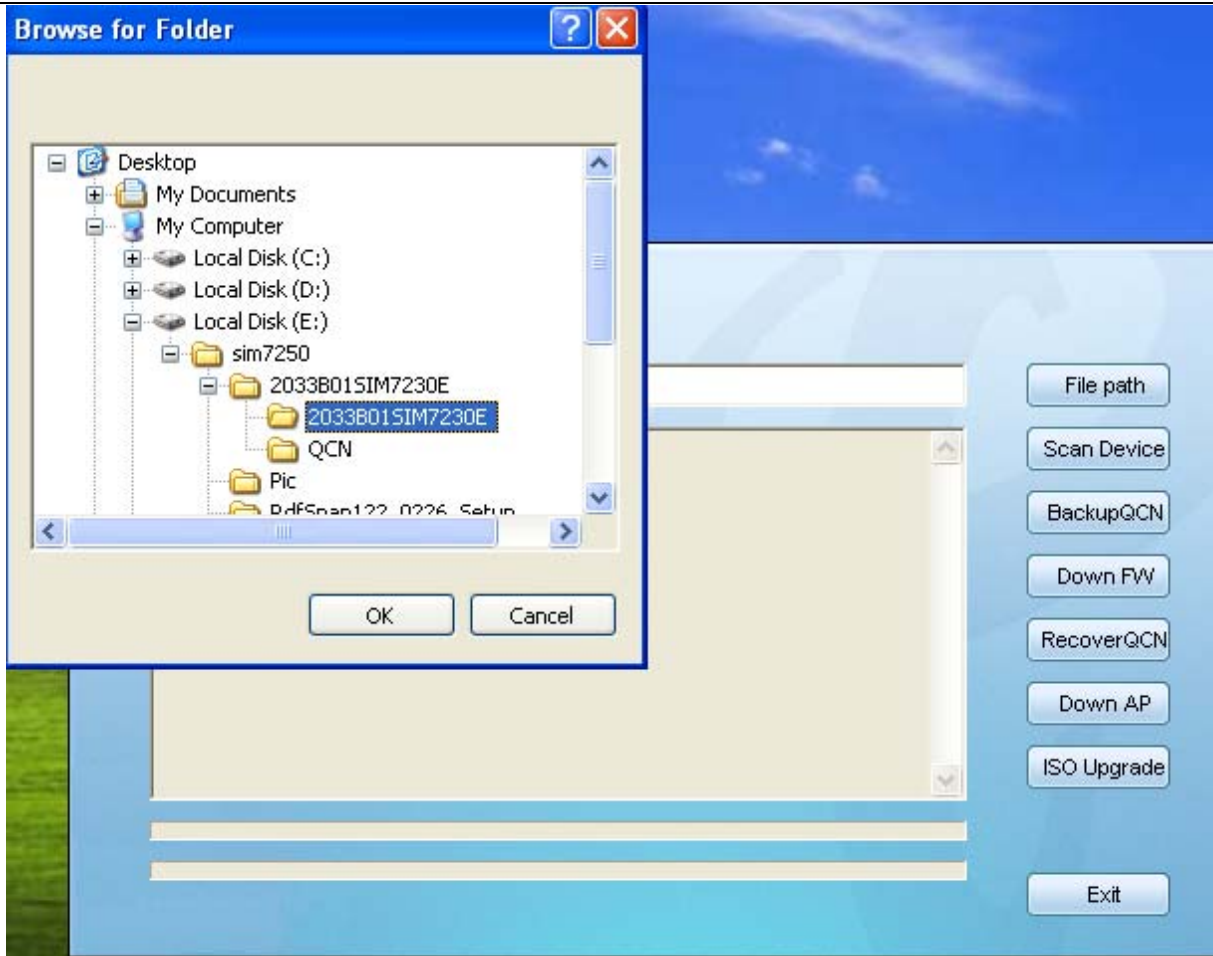


Figure 25: Start download

[Scan Device]

Click the [Scan Device] button, The tool will re enumeration and connection device, to determine whether the device is in the ready state

[BackupQCN]

Before upgrading the FW file, may require to backup the QCN data in the module.

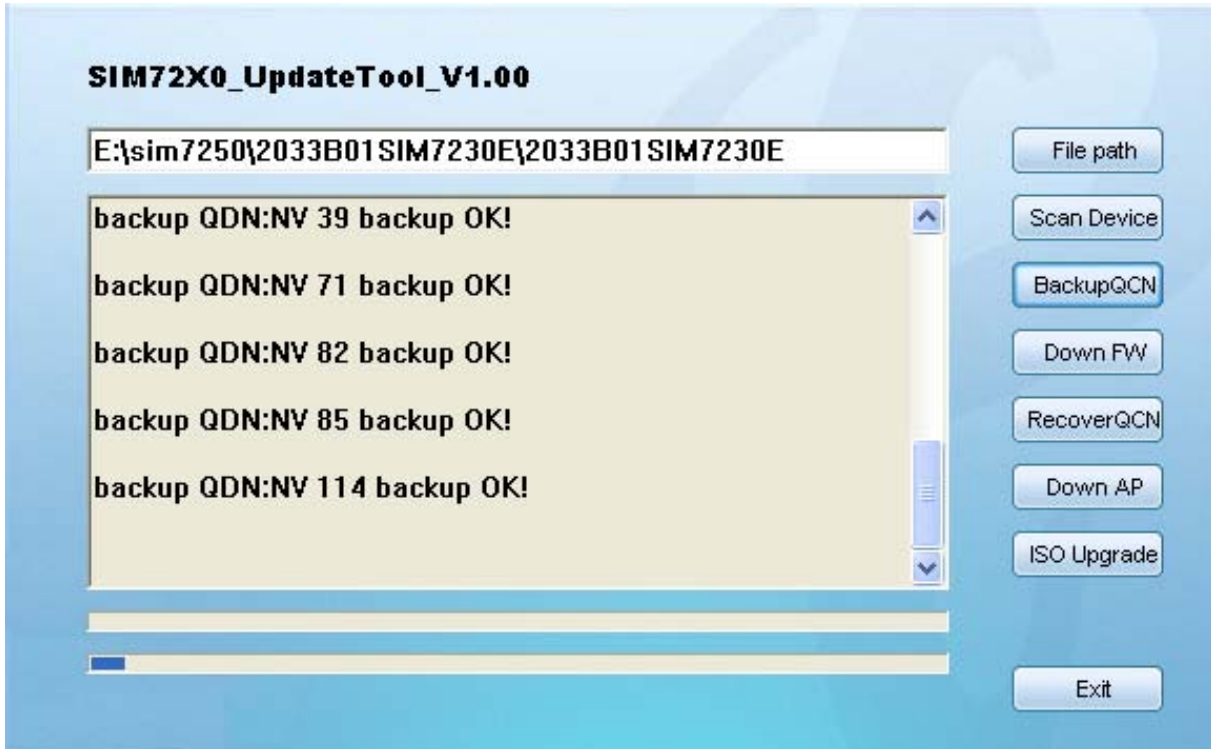


Figure 26: Backup QCN

Backup finished

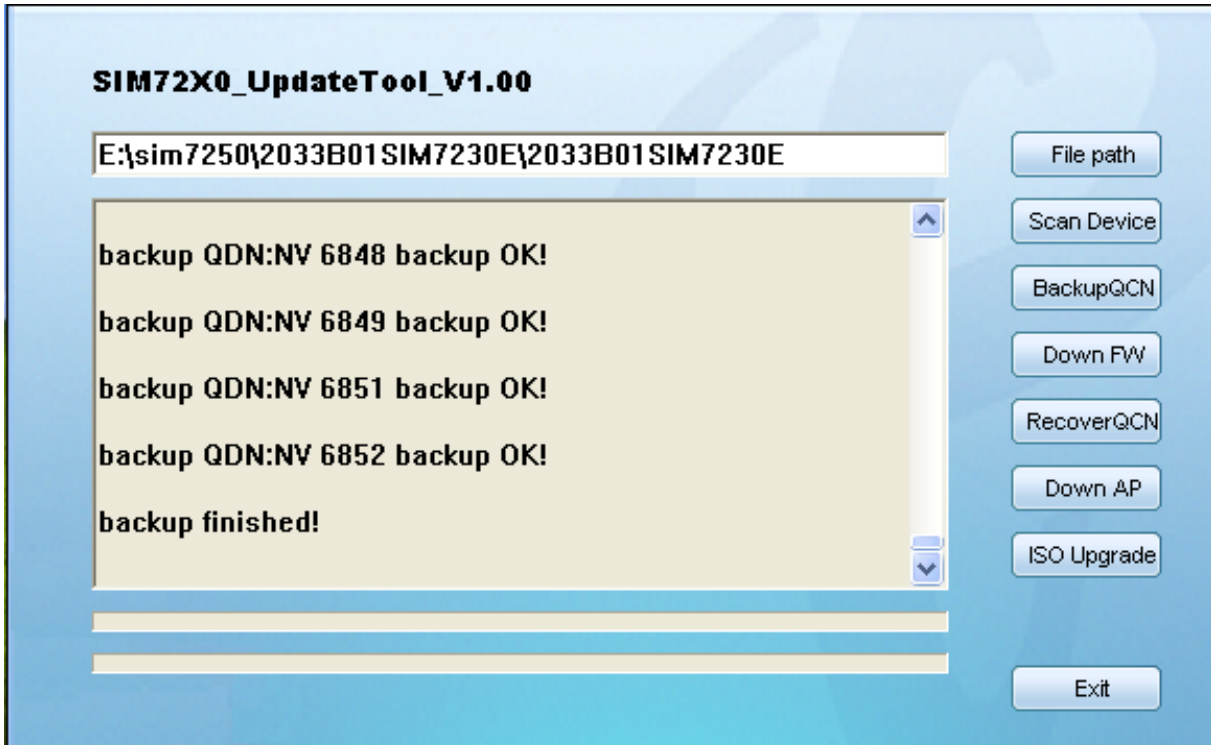


Figure 27: Backup finished

[Down FW]

Click [Down FW] button to upgrade firmware, this process may take several minutes to complete. In the process of upgrading, do not close the PC tool, or unplug the device.

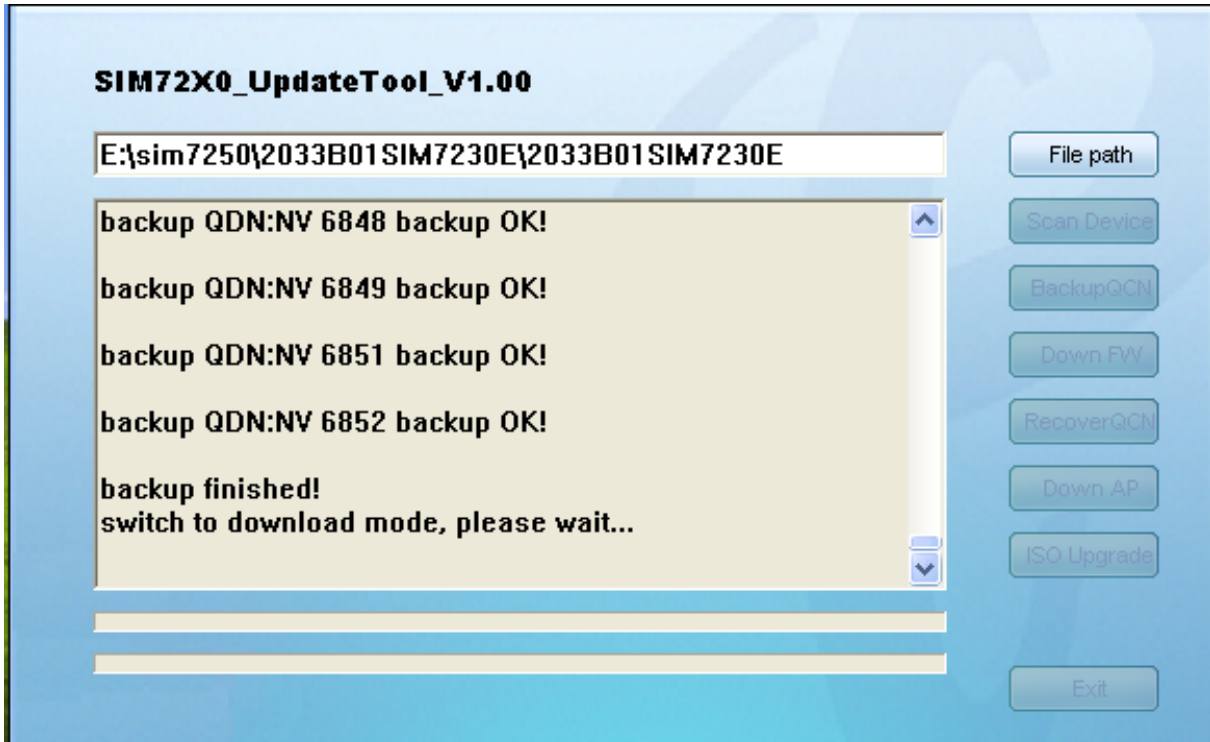


Figure 28: Down FW

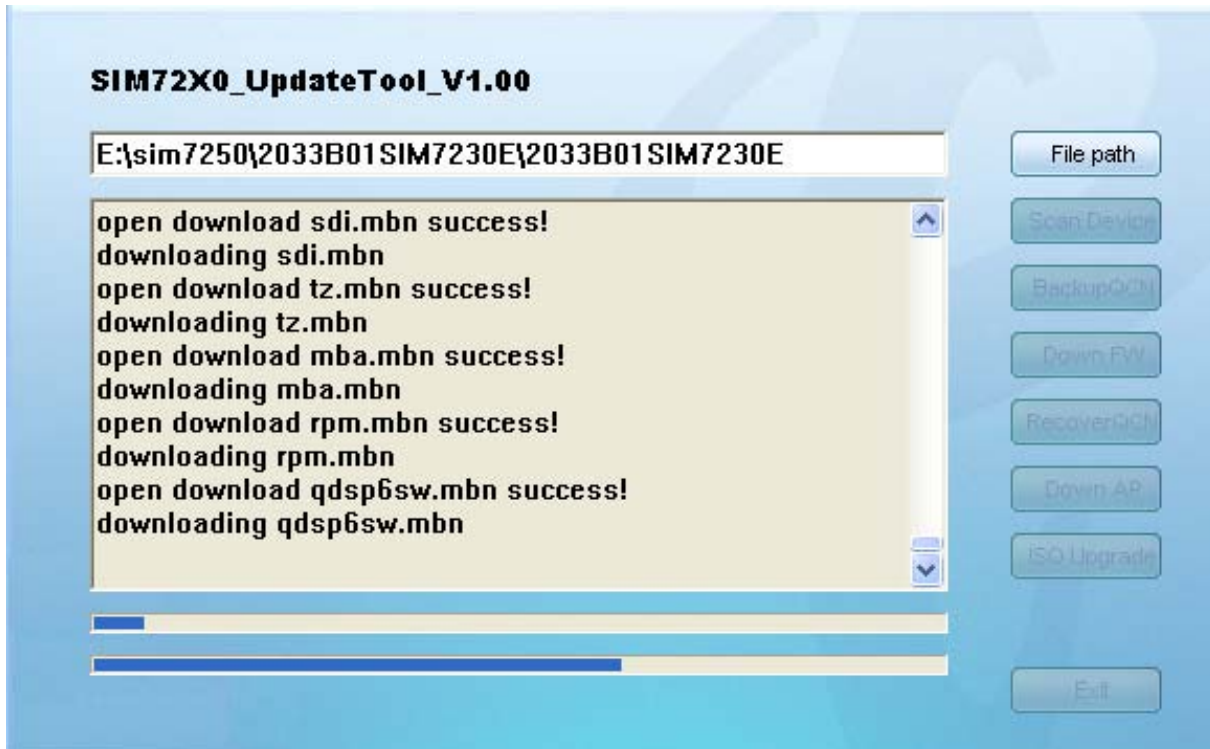


Figure 29: Downloading in process

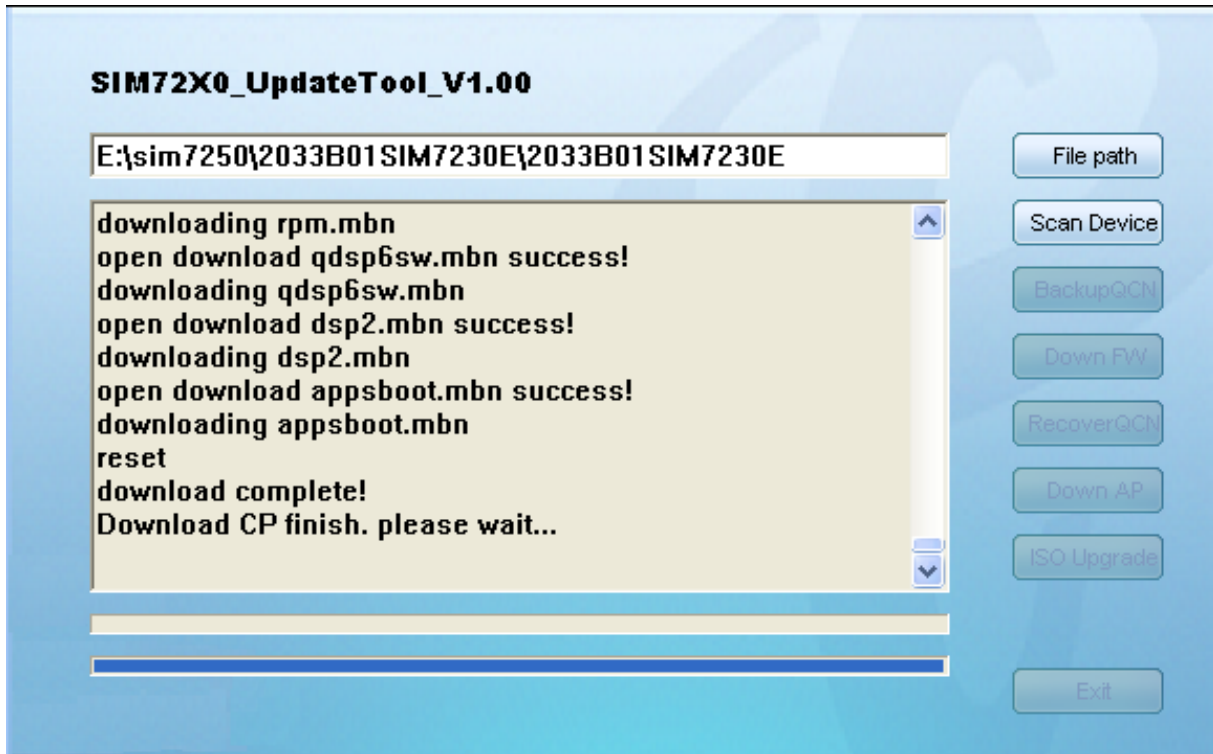


Figure 30: Downloading in process

Upgrade finished, tool will re enumeration and connection device, if device is ready.

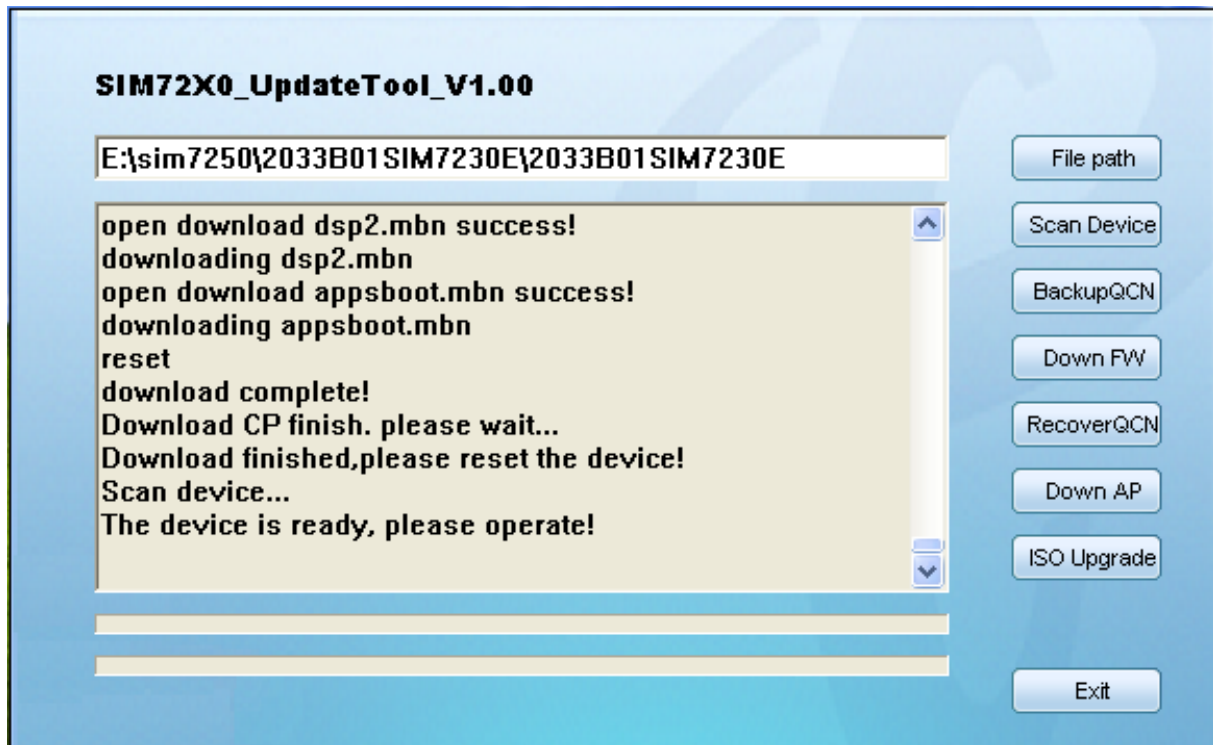


Figure 31: re enumeration and connection device

[RecoverQCN]

Click [RecoverQCN] button to recover QCN just backup.

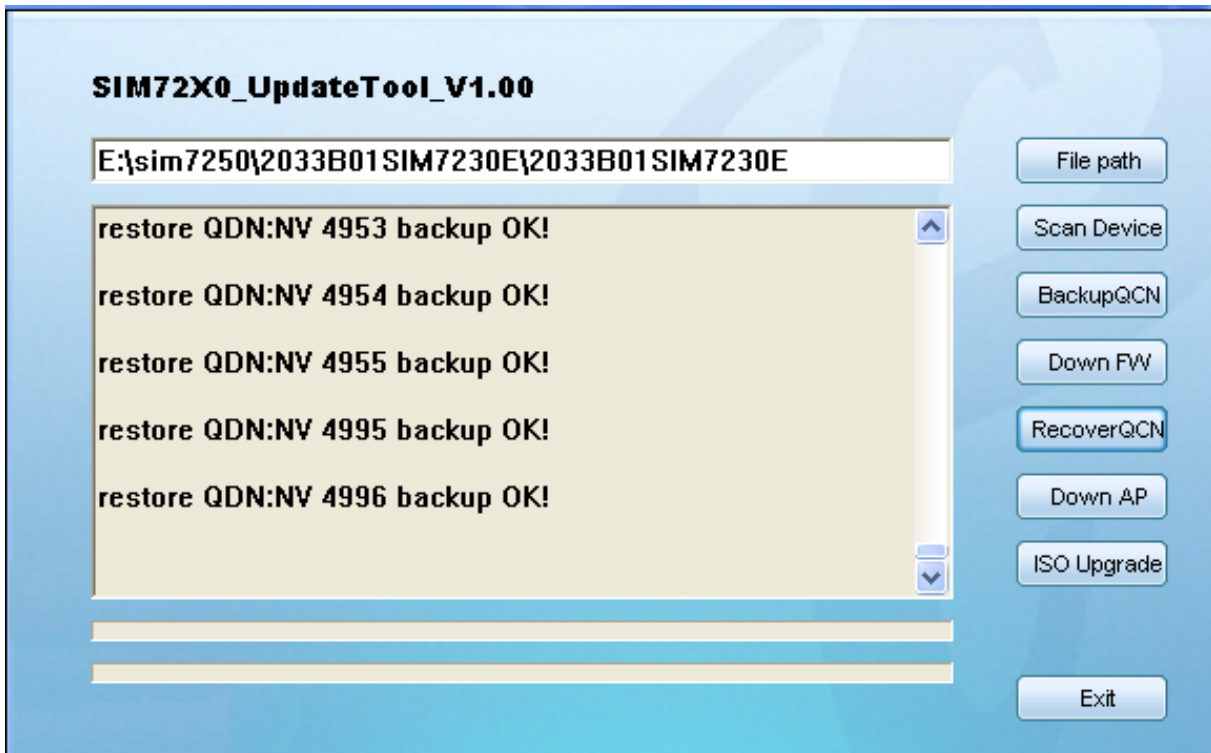


Figure 32: Recover QCN

Recover finished.

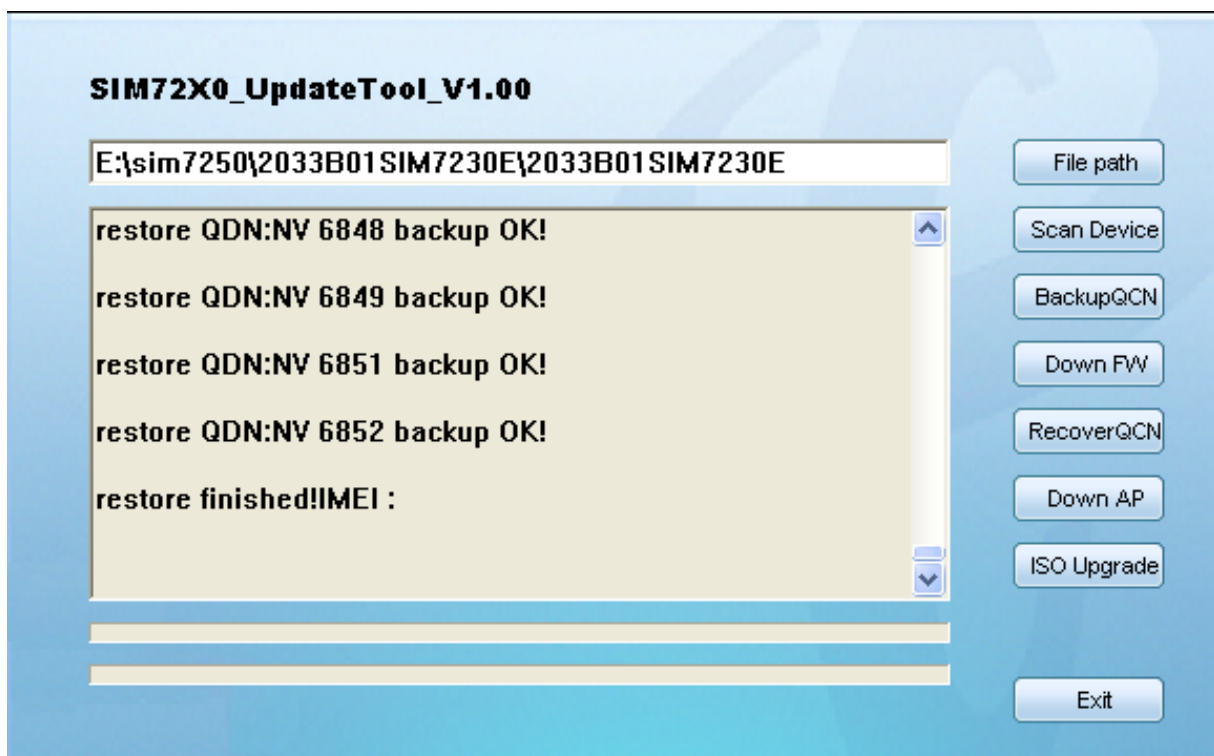


Figure 33: Recover QCN finished

[Down AP]

Click [Down AP] button to upgrade image file through ADB, If the first upgrade failed, will retry later. The tool set failure timeout monitoring time is 2 minutes.

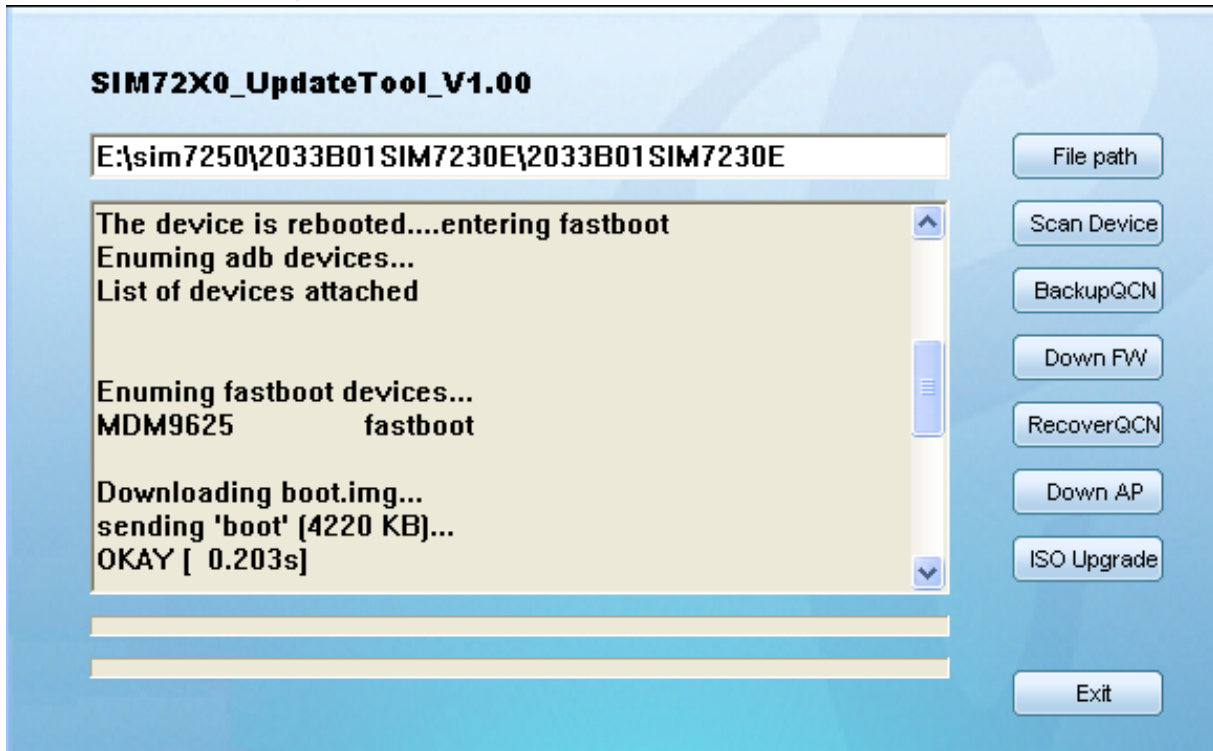


Figure 34: Down AP

Upgrade finished

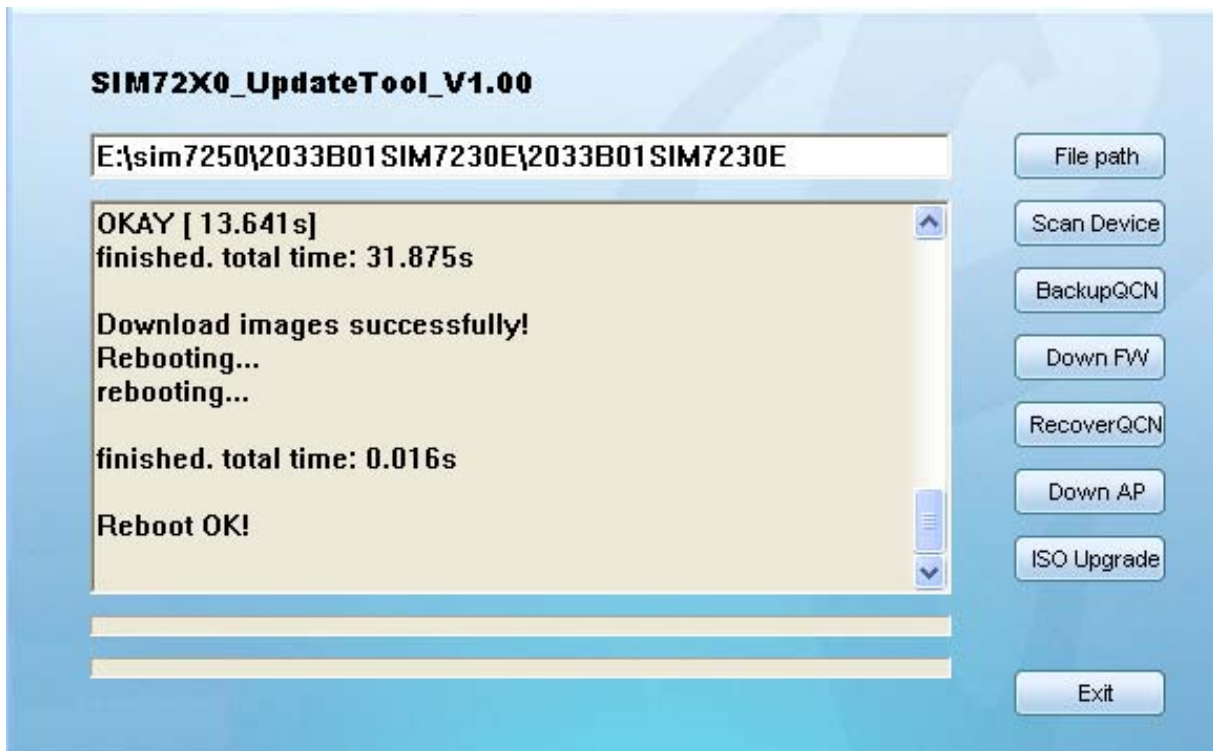


Figure 35: Down AP finished

[ISO Upgrade]

Click [ISO Upgrade] button to push the file named cdrom_install.iso in the ISO folder into the module's CD ROM , for the installation of PC management software.

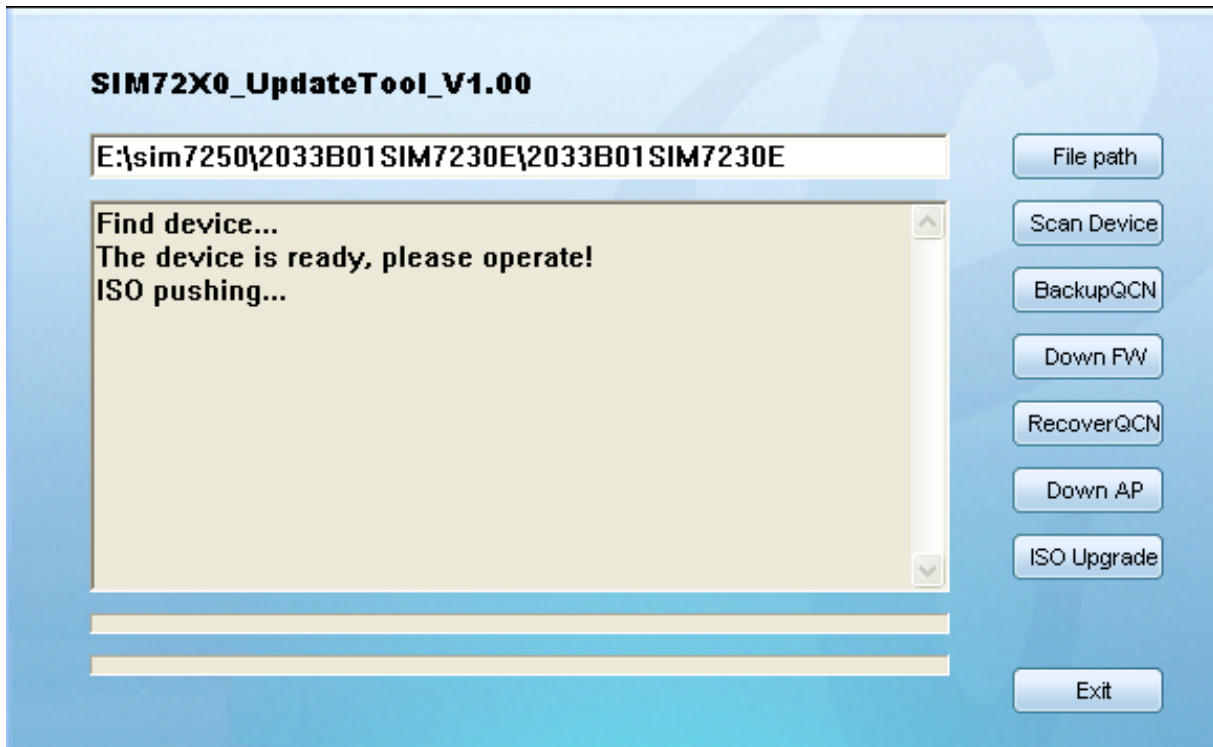


Figure 36: ISO Upgrade

Push finished

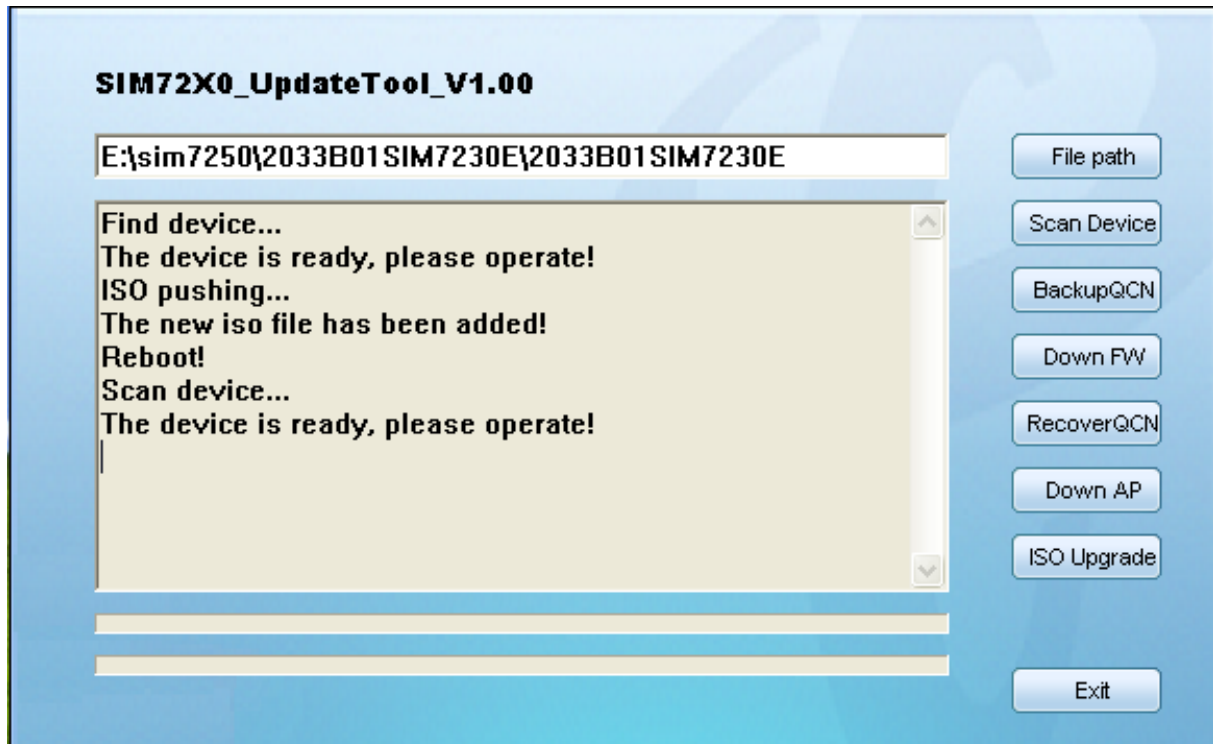


Figure 37: Push finished

7. Appendix







I. Related Documents

Table 12: Related Documents

SN	Document name	Remark
[1]	SIMCOM_SIM72X0_ATC_EN_VX.XX.doc	
[2]	SIM7250_Hardware_Design_VX.XX	

II. Safety Caution

Table 13: Safety caution

Marks	Requirements
	When in a hospital or other health care facility, observe the restrictions about the use of mobiles. Switch the cellular terminal or mobile off, medical equipment may be sensitive to not operate normally for RF energy interference.
	Switch off the cellular terminal or mobile before boarding an aircraft. Make sure it is switched off. The operation of wireless appliances in an aircraft is forbidden to prevent interference with communication systems. Forget to think much of these instructions may lead to the flight safety or offend against local legal action, or both.
	Do not operate the cellular terminal or mobile in the presence of flammable gases or fumes. Switch off the cellular terminal when you are near petrol stations, fuel depots, chemical plants or where blasting operations are in progress. Operation of any electrical equipment in potentially explosive atmospheres can constitute a safety hazard.
	Your cellular terminal or mobile receives and transmits radio frequency energy while switched on. RF interference can occur if it is used close to TV sets, radios, computers or other electric equipment.
	Road safety comes first! Do not use a hand-held cellular terminal or mobile when driving a vehicle, unless it is securely mounted in a holder for hands free operation. Before making a call with a hand-held terminal or mobile, park the vehicle.
	GSM cellular terminals or mobiles operate over radio frequency signals and cellular networks and cannot be guaranteed to connect in all conditions, for example no mobile fee or a invalid SIM card. While you are in this condition and need emergent help, please remember using emergency calls. In order to make or receive calls, the cellular terminal or mobile must be switched on and in a service area with adequate cellular signal strength. Some networks do not allow for emergency call if certain network services or phone features

are in use (e.g. lock functions, fixed dialing etc.). You may have to deactivate those features before you can make an emergency call.

Also, some networks require that a valid SIM card be properly inserted in the cellular terminal or mobile.

Contact us:

Shanghai SIMCom Wireless Solutions Ltd.

Add: SIM Technology Building, No.633, Jinzhong Road, Changning District, Shanghai P.R. China
200335

Tel: +86 21 3235 3300

Fax: +86 21 3235 3301

URL: www.sim.com/wm